

Submersible Sewage And Drainage Pump



ETNA®



- Dirty Water
- Civil
- Industry

0.55~10kW

11~22kW

EFPD

Performance Range

- Flow rate up to 380 m³/h
- Head up to 100 m

Application Limits

- 5 m maximum immersion depth
- Liquid temperature +35 °C
- Ambient temperature up to +40 °C

Installation And Use

The EFPD series pumps are basic submersible sewage pumps with channel impellers. There is a wide product lineup that can be easily installed in combination with auto-coupling rail systems or use free-standing with a flexible hose or flange connection. With excellent reliability and durability, the pump must be completely submerged in water when working. It can run continuously for a long time. Therefore, they contribute to stable equipment operation in pumping stations and water treatment plants, and help greatly reduce maintenance costs. These pumps have been actively used in many water treatment plants, pumping stations, flood control facilities and water parks. When manufactured according to ETAN's unique seawater-resistant specifications, these pumps can be reliably used to draw seawater from shipyards and power plants. In short, the EFPD series reflects our years of experience and expertise, so it can be applied to various fields and applications.

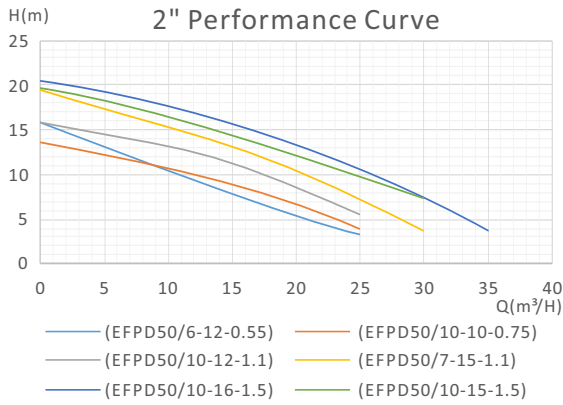
Construction

Pump Body: Cast iron
 Impeller: Channel impeller in cast iron
 Motor Bracket: Cast iron
 Motor Shaft: Stainless steel
 Mechanical Seal: ≤5.5kW, use Sic-Sic and Sic-Graphite;
 >5.5kW, use Sic-Sic and Sic-Alloy.
 Electric Motor: High efficiency three-phase 380/400V-50Hz-2Pole.
 Insulation: Class F.
 Protection: IP X8.

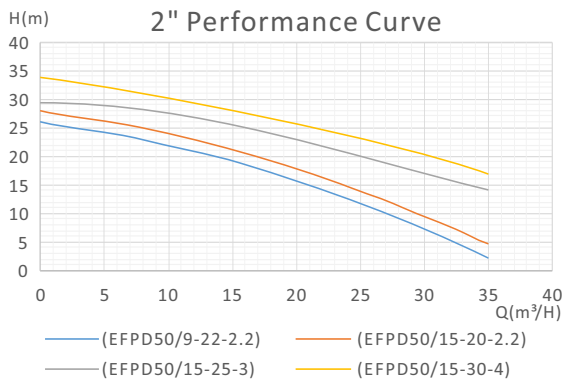
Technical Data

No.	Model	Power		Votalge	Speed	Max.head	Max.flow	Size	Solids Passage
		kW	HP			m	m ³ /h	inch	mm
1	EFPD50/6-12-0.55	0.55	0.75	220V/50Hz	2900/2P	16	26	2"	30
2	EFPD50/10-10-0.75	0.75	1	380V/50Hz	2900/2P	14	26	2"	35
3	EFPD50/10-12-1.1	1.1	1.5	380V/50Hz	2900/2P	16	28	2"	35
4	EFPD50/7-15-1.1	1.1	1.5	380V/50Hz	2900/2P	19	33	2"	35
5	EFPD50/10-16-1.5	1.5	2	380V/50Hz	2900/2P	21	33	2"	35
6	EFPD50/10-15-1.5	1.5	2	380V/50Hz	2900/2P	20	26	2"	35
7	EFPD50/9-22-2.2	2.2	3	380V/50Hz	2900/2P	26	28	2"	35
8	EFPD50/15-20-2.2	2.2	3	380V/50Hz	2900/2P	28	33	2"	35
9	EFPD50/15-25-3	3	4	380V/50Hz	2900/2P	30	33	2"	35
10	EFPD50/15-30-4	4	5.5	380V/50Hz	2900/2P	34	33	2"	35
11	EFPD50/20-35-5.5	5.5	7.5	380V/50Hz	2900/2P	43	60	2"	35
12	EFPD65/15-9-1.1	1.1	1.5	380V/50Hz	2900/2P	15	33	2.5"	23
13	EFPD65/20-10-1.5	1.5	2	380V/50Hz	2900/2P	15	40	2.5"	25
14	EFPD65/20-15-2.2	2.2	3	380V/50Hz	2900/2P	22	48	2.5"	25
15	EFPD65/25-18-3	3	4	380V/50Hz	2900/2P	26	50	2.5"	24
16	EFPD65/37-13-3	3	4	380V/50Hz	2900/2P	28	50	2.5"	24
17	EFPD65/25-25-4	4	5.5	380V/50Hz	2900/2P	32	50	2.5"	22
18	EFPD65/25-30-5.5	5.5	7.5	380V/50Hz	2900/2P	38	65	2.5"	22
19	EFPD65/25-36-7.5	7.5	10	380V/50Hz	2900/2P	45	64	2.5"	22
20	EFPD80/40-7-1.5	1.5	2	380V/50Hz	2900/2P	13	54	3"	35
21	EFPD80/40-10-2.2	2.2	3	380V/50Hz	2900/2P	16	60	3"	35
22	EFPD80/45-12-3	3	4	380V/50Hz	2900/2P	20	75	3"	36
23	EFPD80/43-13-3	3	4	380V/50Hz	2900/2P	20	75	3"	36
24	EFPD80/40-16-4	4	5.5	380V/50Hz	2900/2P	24	80	3"	31
25	EFPD80/40-22-5.5	5.5	7.5	380V/50Hz	2900/2P	30	100	3"	32
26	EFPD80/40-28-7.5	7.5	10	380V/50Hz	2900/2P	33	100	3"	43
27	EFPD100/50-5-1.5	1.5	2	380V/50Hz	2900/2P	14	65	4"	35
28	EFPD100/50-7-2.2	2.2	3	380V/50Hz	2900/2P	17	84	4"	35
29	EFPD100/60-9-3	3	4	380V/50Hz	2900/2P	19	85	4"	36
30	EFPD100/60-12-4	4	5.5	380V/50Hz	2900/2P	23	90	4"	31
31	EFPD100/80-10-4	4	5.5	380V/50Hz	2900/2P	24	100	4"	31
32	EFPD100/80-10-4	5.5	7.5	380V/50Hz	2900/2P	30	95	4"	32
33	EFPD100/65-22-7.5	7.5	10	380V/50Hz	2900/2P	32	100	4"	43
34	EFPD150/120-8-5.5	5.5	7.5	380V/50Hz	2900/2P	25	130	6"	62
35	EFPD150/100-10-7.5	7.5	10	380V/50Hz	2900/2P	24	130	6"	62

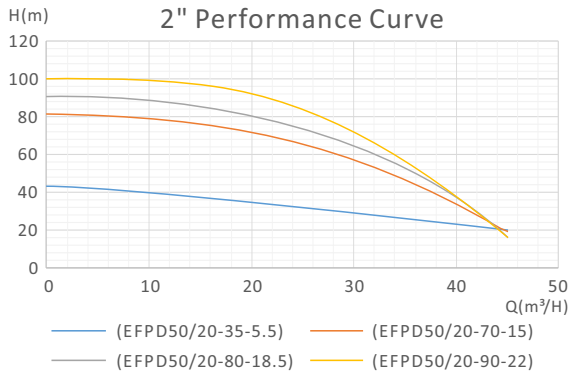
Hydraulic Performance Curves



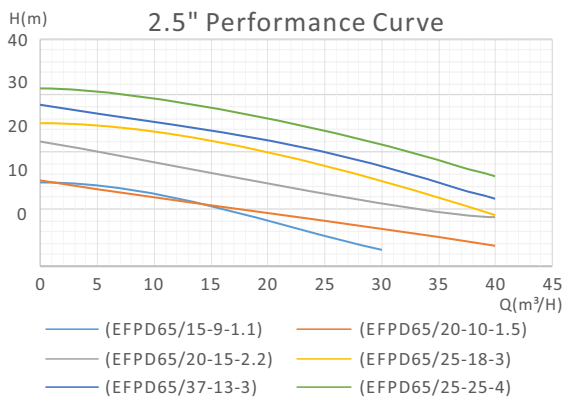
Model	Q(L/min)	0	85	170	250	350	420	500	600
	Q(m³/h)	0	5	10	15	20	25	30	35
EFPD50/6-12-0.55	H(m)	16	13	10	8	6	3	/	/
EFPD50/10-10-0.75		14	12	10	9	8	3	/	/
EFPD50/10-12-1.1		16	14.5	13	11	9.5	5	/	/
EFPD50/7-15-1.1		19	18	16	13	10	7	4	/
EFPD50/10-16-1.5		21	19	17	15	14	11	8	3
EFPD50/10-15-1.5		20	18	16	14	13	10	7	/



Model	Q(L/min)	0	85	170	250	350	420	500	600
	Q(m³/h)	0	5	10	15	20	25	30	35
EFPD50/9-22-2.2	H(m)	26	24	22	19	16	11	8	2
EFPD50/15-20-2.2		28	26	24	21	18	13	11	4
EFPD50/15-25-3		30	28	27	25	23	21	19	13
EFPD50/15-30-4		34	32	31	30	26	23	20	17

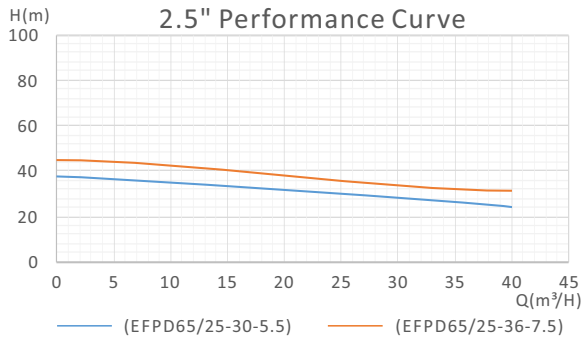


Model	Q(L/min)	0	170	350	420	500	600	750	/
	Q(m³/h)	0	10	20	25	30	35	45	/
EFPD50/20-35-5.5	H(m)	43	39	35	30	29	26	20	/
EFPD50/20-70-15		81	77	71	66	63	54	15	/
EFPD50/20-80-18.5		90	85	80	76	70	63	10	/
EFPD50/20-90-22		100	95	90	84	80	64	11	/

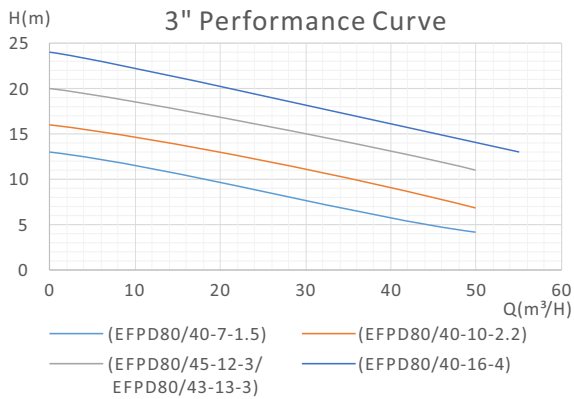


Model	Q(L/min)	0	85	170	350	420	500	600	680
	Q(m³/h)	0	5	10	20	25	30	35	40
EFPD65/15-9-1.1	H(m)	15	13.5	12	9	6	2.3	/	/
EFPD65/20-10-1.5		15	14	12.5	10	8.5	7.5	5.5	3
EFPD65/20-15-2.2		22	20	18	14	13	12	10	8
EFPD65/25-18-3		26	24	23	20	18	16	13	8
EFPD65/37-13-3		28	27	25	22	19	17	15	12
EFPD65/25-25-4		32	31	28	25	24.5	24	18.5	14.5

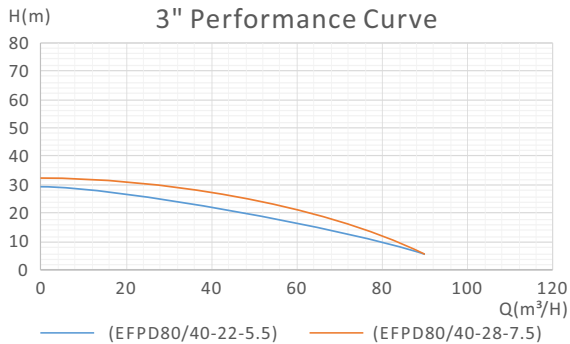
Hydraulic Performance Curves



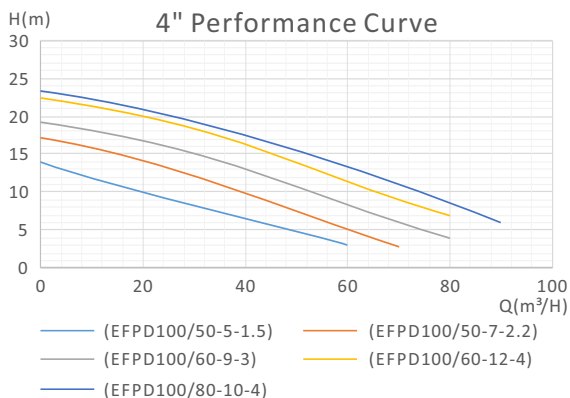
Model	Q(L/min)	0	85	170	350	420	500	600	680
	Q(m³/h)	0	5	10	20	25	30	35	40
EFPD65/25-30-5.5	H(m)	38	36	34	31	29	28	26	24
EFPD65/25-36-7.5	H(m)	45	43	40.7	38	36	35	33	31



Model	Q(L/min)	0	85	170	350	500	680	750	840
	Q(m³/h)	0	5	10	20	30	40	45	50
EFPD80/40-7-1.5	H(m)	13	12	11.5	9	8	6	5	4
EFPD80/40-10-2.2	H(m)	16	15.5	14.5	12.5	11	10	8	6
EFPD80/45-12-3	H(m)	20	19	18.5	16.5	15	13	12	11
EFPD80/43-13-3	H(m)	20	19	18.5	16.5	15	13	12	11
EFPD80/40-16-4	H(m)	24	23	20	18	16	15	14	/

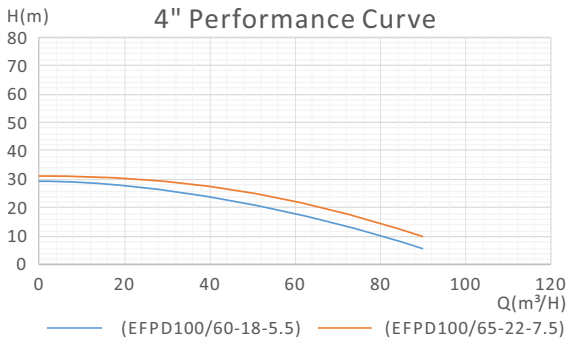


Model	Q(L/min)	0	170	500	680	1000	1170	1350	1500
	Q(m³/h)	0	10	30	40	60	70	80	90
EFPD80/40-22-5.5	H(m)	30	28	24	22	17	14	10	8
EFPD80/40-28-7.5	H(m)	33	32	30	28	21	17	11	6

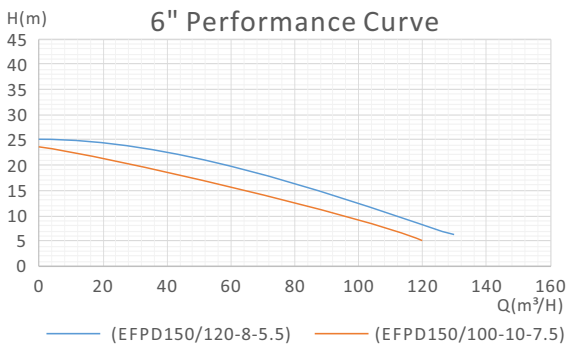


Model	Q(L/min)	0	170	350	500	840	1000	1350	1500
	Q(m³/h)	0	10	20	30	50	60	80	90
EFPD100/50-5-1.5	H(m)	14	11.5	10	8	8	3	/	/
EFPD100/50-7-2.2	H(m)	17	16	14	12	8	5	/	/
EFPD100/60-9-3	H(m)	19	18	17	15	11	9	4	/
EFPD100/60-12-4	H(m)	23	21	19	18	15	13	6	/
EFPD100/80-10-4	H(m)	24	22	20	19	16	14	10	5

Hydraulic Performance Curves

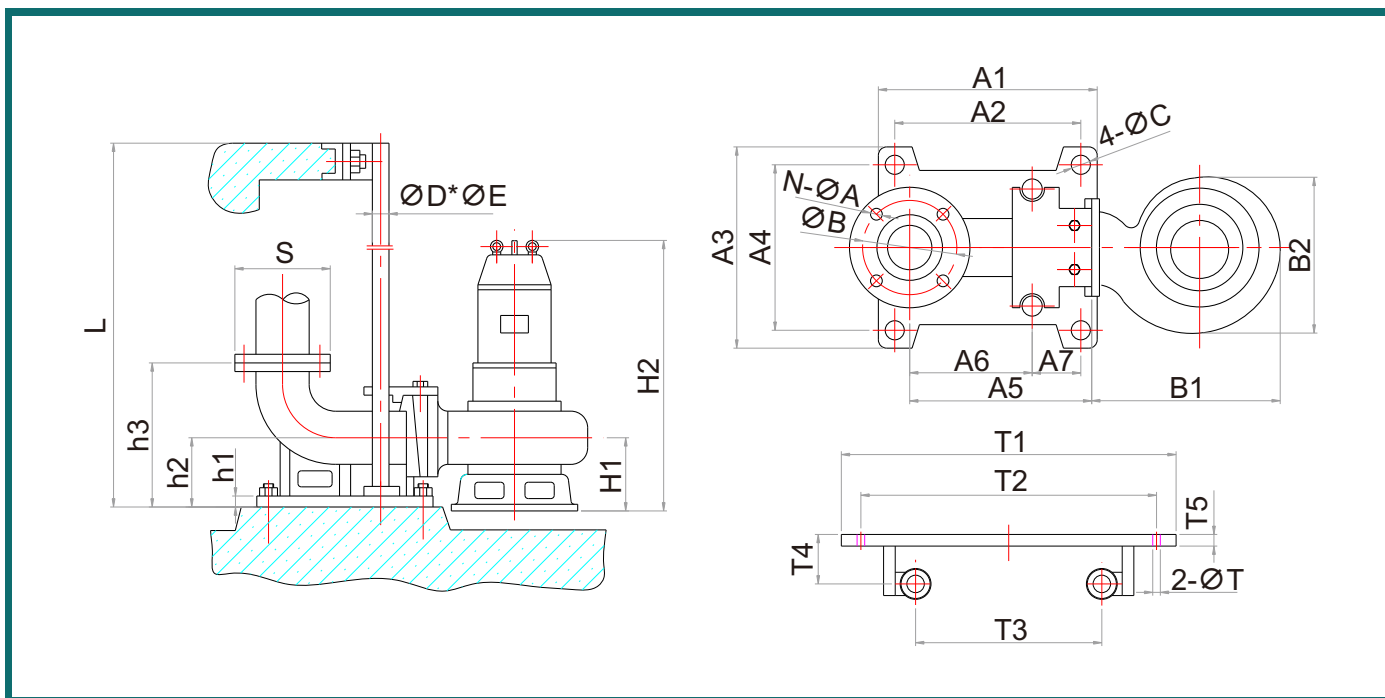


Model	Q(L/min)	0	350	680	1000	1350	1500	1670	2000
	Q(m³/h)	0	20	40	60	80	90	100	120
EFPD100/60-18-5.5	H(m)	30	27	24	19	10	5	/	/
EFPD100/65-22-7.5	H(m)	32	30	26	23	16	8	/	/



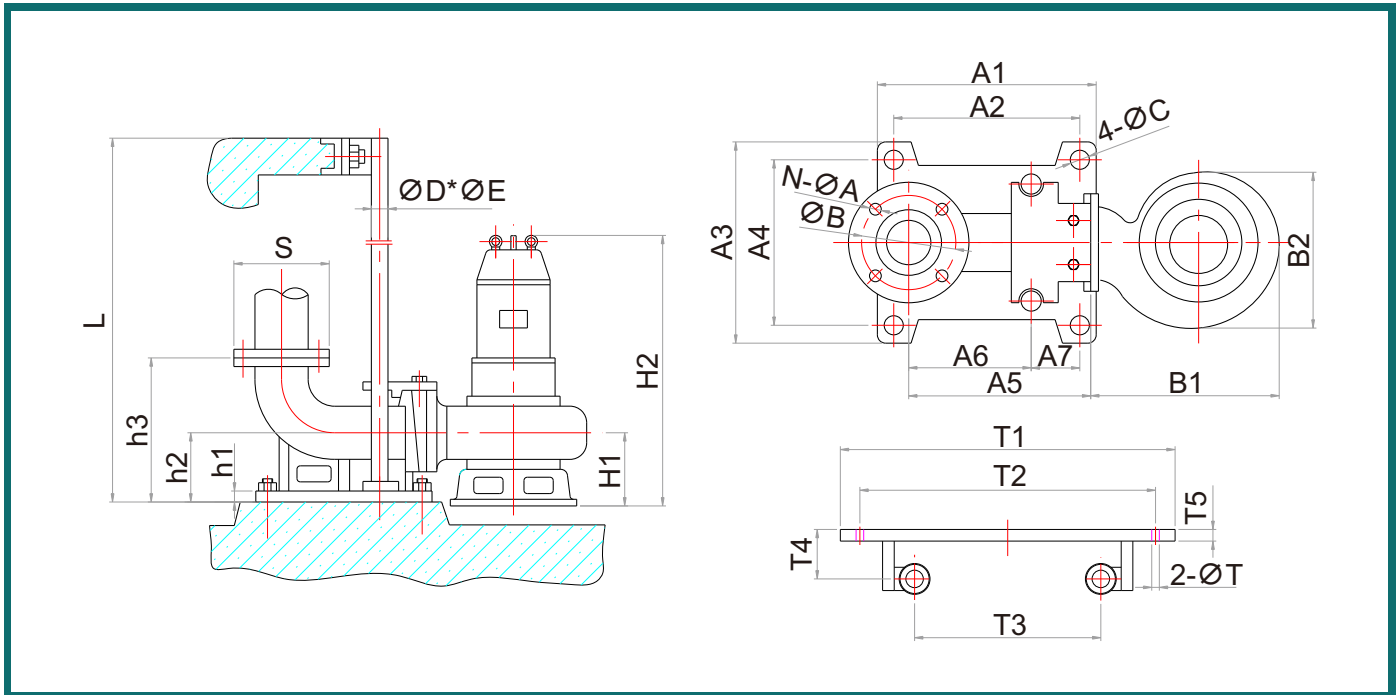
Model	Q(L/min)	0	350	680	1350	1670	2000	2170	2350
	Q(m³/h)	0	20	40	80	100	120	130	140
EFPD150/120-8-5.5	H(m)	25	23	21	17	13	9	/	/
EFPD150/100-10-7.5	H(m)	24	21	18	13	10	4	/	/

Dimension



Model	Dimensions(mm)																									
	N-ØA	ØB	4-ØC	ØD*ØE	H1	H2	h1	h2	h3	S	A1	A2	A3	A4	A5	A6	A7	B1	B2	T1	T2	T3	T4	T5	2-ØT	
EFPD50/10-10-0.75	4-Ø14	Ø110	4-Ø16	Ø26.5*Ø32	105	510	12	130	210	140	210	166	160	140	230	155	25	230	190	265	220	100	70	20	2-Ø12	
EFPD50/10-12-1.1	4-Ø14	Ø110	4-Ø16	Ø26.5*Ø32	105	530	12	130	210	140	210	166	160	140	230	155	25	230	190	265	220	100	70	20	2-Ø12	
EFPD50/7-15-1.1	4-Ø14	Ø110	4-Ø16	Ø26.5*Ø32	105	530	12	130	210	140	210	166	160	140	230	155	25	230	190	265	220	100	70	20	2-Ø12	
EFPD50/10-16-1.5	4-Ø14	Ø110	4-Ø16	Ø26.5*Ø32	145	590	12	130	210	140	210	166	160	140	230	155	25	240	200	265	220	100	70	20	2-Ø12	
EFPD50/10-15-1.5	4-Ø14	Ø110	4-Ø16	Ø26.5*Ø32	145	590	12	130	210	140	210	166	160	140	230	155	25	240	200	265	220	100	70	20	2-Ø12	
EFPD50/9-22-2.2	4-Ø14	Ø110	4-Ø16	Ø26.5*Ø32	130	630	12	130	210	140	210	166	160	140	230	155	25	280	230	265	220	100	70	20	2-Ø12	
EFPD50/15-20-2.2	4-Ø14	Ø110	4-Ø16	Ø26.5*Ø32	130	630	12	130	210	140	210	166	160	140	230	155	25	280	230	265	220	100	70	20	2-Ø12	
EFPD50/15-25-3	4-Ø14	Ø110	4-Ø16	Ø26.5*Ø32	115	580	12	130	210	140	210	166	160	140	230	155	25	240	200	265	220	100	70	20	2-Ø12	
EFPD50/15-30-4	4-Ø14	Ø110	4-Ø16	Ø26.5*Ø32	140	660	12	130	210	140	210	166	160	140	230	155	25	330	260	265	220	100	70	20	2-Ø12	
EFPD50/20-35-5.5	4-Ø14	Ø110	4-Ø16	Ø26.5*Ø32	155	750	12	130	210	140	210	166	160	140	230	155	25	340	280	265	220	100	70	20	2-Ø12	
EFPD65/15-9-1.1	4-Ø14	Ø130	4-Ø16	Ø26.5*Ø32	105	530	12	150	245	160	235	185	200	175	260	175	40	230	190	275	240	130	70	20	2-Ø12	
EFPD65/20-10-1.5	4-Ø14	Ø130	4-Ø16	Ø26.5*Ø32	105	530	12	150	245	160	235	185	200	175	260	175	40	230	190	275	240	130	70	20	2-Ø12	
EFPD65/20-15-2.2	4-Ø14	Ø130	4-Ø16	Ø26.5*Ø32	115	590	12	150	245	160	235	185	200	175	260	175	40	240	200	275	240	130	70	20	2-Ø12	
EFPD65/25-18-3	4-Ø14	Ø130	4-Ø16	Ø26.5*Ø32	130	630	12	150	245	160	235	185	200	175	260	175	40	280	230	275	240	130	70	20	2-Ø12	
EFPD65/37-13-3	4-Ø14	Ø130	4-Ø16	Ø26.5*Ø32	130	630	12	150	245	160	235	185	200	175	260	175	40	280	230	275	240	130	70	20	2-Ø12	
EFPD65/25-25-4	4-Ø14	Ø130	4-Ø16	Ø26.5*Ø32	140	660	12	150	245	160	235	185	200	175	260	175	40	330	260	275	240	130	70	20	2-Ø12	
EFPD65/25-30-5.5	4-Ø14	Ø130	4-Ø16	Ø26.5*Ø32	155	750	12	150	245	160	235	185	200	175	260	175	40	340	280	275	240	130	70	20	2-Ø12	
EFPD65/25-36-7.5	4-Ø14	Ø130	4-Ø16	Ø26.5*Ø32	155	780	12	150	245	160	235	185	200	175	260	175	40	340	280	275	240	130	70	20	2-Ø12	

Dimension



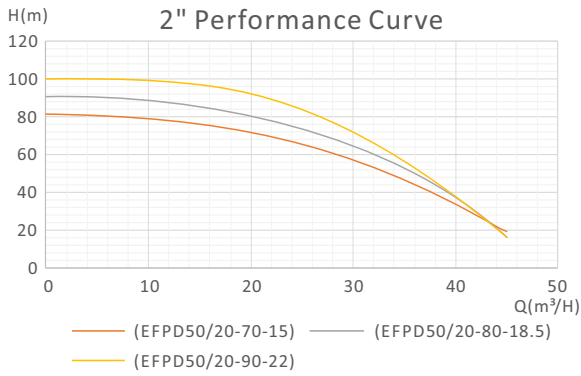
Model	Dimensions(mm)																									
	N-ØA	ØB	4-ØC	ØD*ØE	H1	H2	h1	h2	h3	S	A1	A2	A3	A4	A5	A6	A7	B1	B2	T1	T2	T3	T4	T5	2-ØT	
EFPD80/40-7-1.5	4-Ø18	Ø150	4-Ø16	Ø42*Ø47	128	580	12	170	280	190	270	210	230	195	300	192	50	250	200	315	270	150	80	20	2-Ø12	
EFPD80/40-10-2.2	4-Ø18	Ø150	4-Ø16	Ø42*Ø47	125	610	12	170	280	190	270	210	230	195	300	192	50	250	200	315	270	150	80	20	2-Ø12	
EFPD80/45-12-3	4-Ø18	Ø150	4-Ø16	Ø42*Ø47	150	660	12	170	280	190	270	210	230	195	300	192	50	290	240	315	270	150	80	20	2-Ø12	
EFPD80/43-13-3	4-Ø18	Ø150	4-Ø16	Ø42*Ø47	150	660	12	170	280	190	270	210	230	195	300	192	50	290	240	315	270	150	80	20	2-Ø12	
EFPD80/40-16-4	4-Ø18	Ø150	4-Ø16	Ø42*Ø47	150	690	12	170	280	190	270	210	230	195	300	192	50	340	260	315	270	150	80	20	2-Ø12	
EFPD80/40-22-5.5	4-Ø18	Ø150	4-Ø16	Ø42*Ø47	175	780	12	170	280	190	270	210	230	195	300	192	50	350	300	315	270	150	80	20	2-Ø12	
EFPD80/40-28-7.5	4-Ø18	Ø150	4-Ø16	Ø42*Ø47	175	810	12	170	280	190	270	210	230	195	300	192	50	350	300	315	270	150	80	20	2-Ø12	
EFPD100/50-5-1.5	4-Ø18	Ø170	4-Ø20	Ø42*Ø47	125	580	15	200	335	210	260	196	210	175	305	190	60	250	200	360	305	170	90	20	2-Ø12	
EFPD100/50-7-2.2	4-Ø18	Ø170	4-Ø20	Ø42*Ø47	125	610	15	200	340	210	320	256	270	230	355	233	60	250	200	360	305	170	90	20	2-Ø12	
EFPD100/60-9-3	4-Ø18	Ø170	4-Ø20	Ø42*Ø47	150	660	15	200	340	210	320	256	270	230	355	233	60	290	240	360	305	170	90	20	2-Ø12	
EFPD100/60-12-4	4-Ø18	Ø170	4-Ø20	Ø42*Ø47	150	690	15	200	340	210	320	256	270	230	355	233	60	340	260	360	305	170	90	20	2-Ø12	
EFPD100/80-10-4	4-Ø18	Ø170	4-Ø20	Ø42*Ø47	150	690	15	200	340	210	320	256	270	230	355	233	60	340	260	360	305	170	90	20	2-Ø12	
EFPD100/60-18-5.5	4-Ø18	Ø170	4-Ø20	Ø42*Ø47	175	780	15	200	340	210	320	256	270	230	355	233	60	350	300	360	305	170	90	20	2-Ø12	
EFPD100/65-22-7.5	4-Ø18	Ø170	4-Ø20	Ø42*Ø47	175	810	15	200	340	210	320	256	270	230	355	233	60	350	300	360	305	170	90	20	2-Ø12	
EFPD150/120-8-5.5	8-Ø18	Ø225	4-Ø20	Ø42*Ø47	180	790	15	260	415	265	340	252	260	230	370	205	80	350	300	465	400	205	80	15	2-Ø16	
EFPD150/100-10-7.5	8-Ø18	Ø225	4-Ø20	Ø42*Ø47	180	790	15	260	415	265	340	252	260	230	370	205	80	350	300	465	400	205	80	15	2-Ø16	



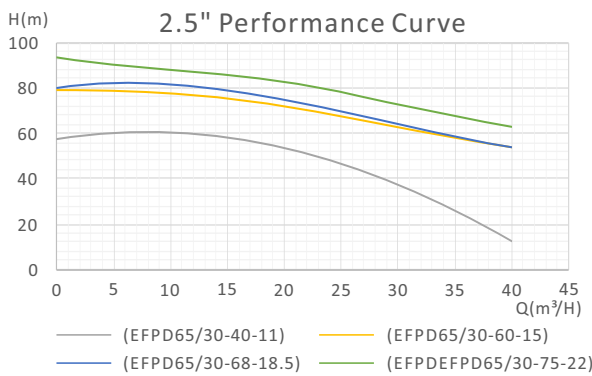
Technical Data

No.	Model	Power		Votalge	Speed	Max.head	Max.flow	Size	Solids Passage
		kW	HP			m	m³/h	inch	mm
1	EFPD50/20-70-15	15	22	380V/50Hz	2900/2P	81	50	2"	10
2	EFPD50/20-80-18.5	18.5	25	380V/50Hz	2900/2P	90	48	2"	10
3	EFPD50/20-90-22	22	30	380V/50Hz	2900/2P	100	47	2"	10
4	EFPD65/30-40-11	11	15	380V/50Hz	2900/2P	60	44	2.5"	10
5	EFPD65/30-60-15	15	22	380V/50Hz	2900/2P	80	45	2.5"	10
6	EFPD65/30-68-18.5	18.5	25	380V/50Hz	2900/2P	82	45	2.5"	10
7	EFPD65/30-75-22	22	30	380V/50Hz	2900/2P	95	45	2.5"	10
8	EFPD80/60-30-11	11	15	380V/50Hz	2900/2P	45	100	3"	10
9	EFPD80/60-40-15	15	22	380V/50Hz	2900/2P	55	100	3"	10
10	EFPD80/60-45-18.5	18.5	25	380V/50Hz	2900/2P	62	130	3"	10
11	EFPD80/60-50-22	22	30	380V/50Hz	2900/2P	69	130	3"	10
12	EFPD100/80-25-11	11	15	380V/50Hz	2900/2P	40	130	4"	10
13	EFPD100/80-35-15	15	22	380V/50Hz	2900/2P	50	130	4"	10
14	EFPD100/80-40-18.5	18.5	25	380V/50Hz	2900/2P	55	130	4"	10
15	EFPD100/80-45-22	22	30	380V/50Hz	2900/2P	67	120	4"	10
16	EFPD150/100-20-11	11	15	380V/50Hz	2900/2P	32	150	6"	51
17	EFPD150/100-30-15	15	22	380V/50Hz	2900/2P	43	150	6"	51
18	EFPD150/120-15-11	11	15	380V/50Hz	2900/2P	32	150	6"	51
19	EFPD150/120-25-15	15	22	380V/50Hz	2900/2P	43	150	6"	51
20	EFPD200/180-11-11	5.5	7.5	380V/50Hz	2900/2P	27	280	8"	68
21	EFPD200/180-15-15	7.5	10	380V/50Hz	2900/2P	32	260	8"	68
22	EFPD200/180-18-18.5	18.5	25	380V/50Hz	2900/2P	29	370	8"	70
23	EFPD200/200-20-22	22	30	380V/50Hz	2900/2P	34	380	8"	70
24	EFPD150/100-36-18.5	18.5	25	380V/50Hz	2900/2P	49	200	6"	47
25	EFPD150/100-40-22	22	30	380V/50Hz	2900/2P	54	200	6"	47

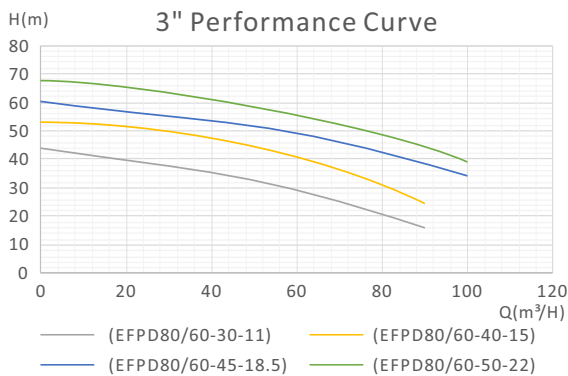
Hydraulic Performance Curves



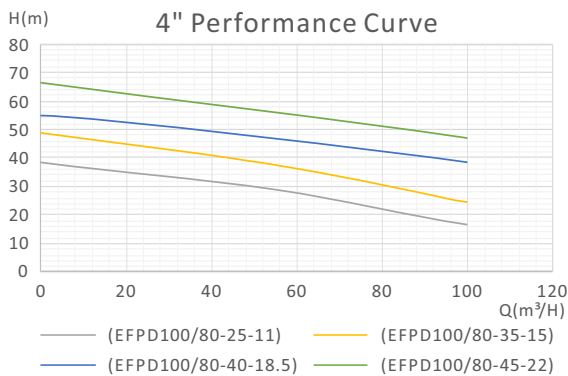
Model	Q(L/min)	0	170	350	420	500	600	750	/
	Q(m³/h)	0	10	20	25	30	35	45	/
EFPD50/20-70-15	H(m)	81	77	71	66	61	54	15	/
EFPD50/20-80-18.5		90	85	80	76	70	63	10	/
EFPD50/20-90-22		100	95	90	84	80	64	11	/



Model	Q(L/min)	0	85	170	350	420	500	600	680
	Q(m³/h)	0	5	10	20	25	30	35	40
EFPD65/30-40-11	H(m)	60	59	58	52	48	44	22	12
EFPD65/30-60-15		80	78	76	73	70	65	59	53
EFPD65/30-68-18.5		82	80	78	75	73	69	60	52
EFPD65/30-75-22		95	91	82	79	76	70	60	/

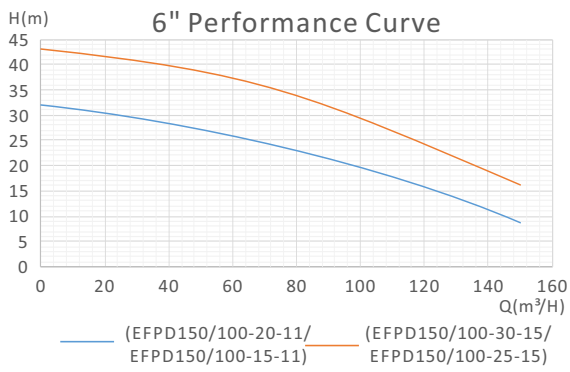


Model	Q(L/min)	0	170	500	680	1000	1170	1350	1500
	Q(m³/h)	0	10	30	40	60	70	80	90
EFPD80/60-30-11	H(m)	45	42	37	35	30	26	22	14
EFPD80/60-40-15		55	53	48	46	41	39	36	19
EFPD80/60-45-18.5		62	59	55	53	50	47	44	42
EFPD80/60-50-22		69	67	62	60	55	53	50	48

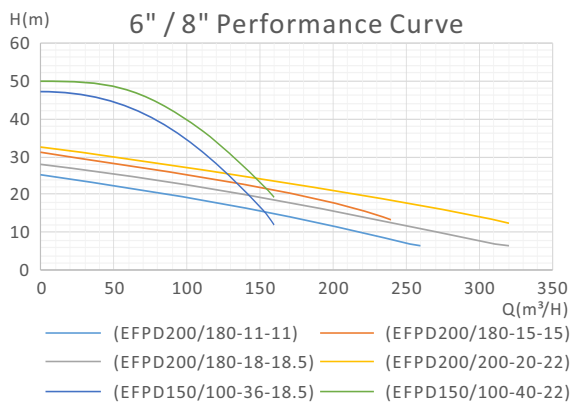


Model	Q(L/min)	0	350	680	1000	1350	1500	1670	2000
	Q(m³/h)	0	20	40	60	80	90	100	120
EFPD100/80-25-11	H(m)	40	34	32	27	25	22	13	8
EFPD100/80-35-15		50	45	40	37	35	30	20	10
EFPD100/80-40-18.5		55	52	49	46	43	40	38	15
EFPD100/80-45-22		67	62	58	55	51	49	47	3

Hydraulic Performance Curves

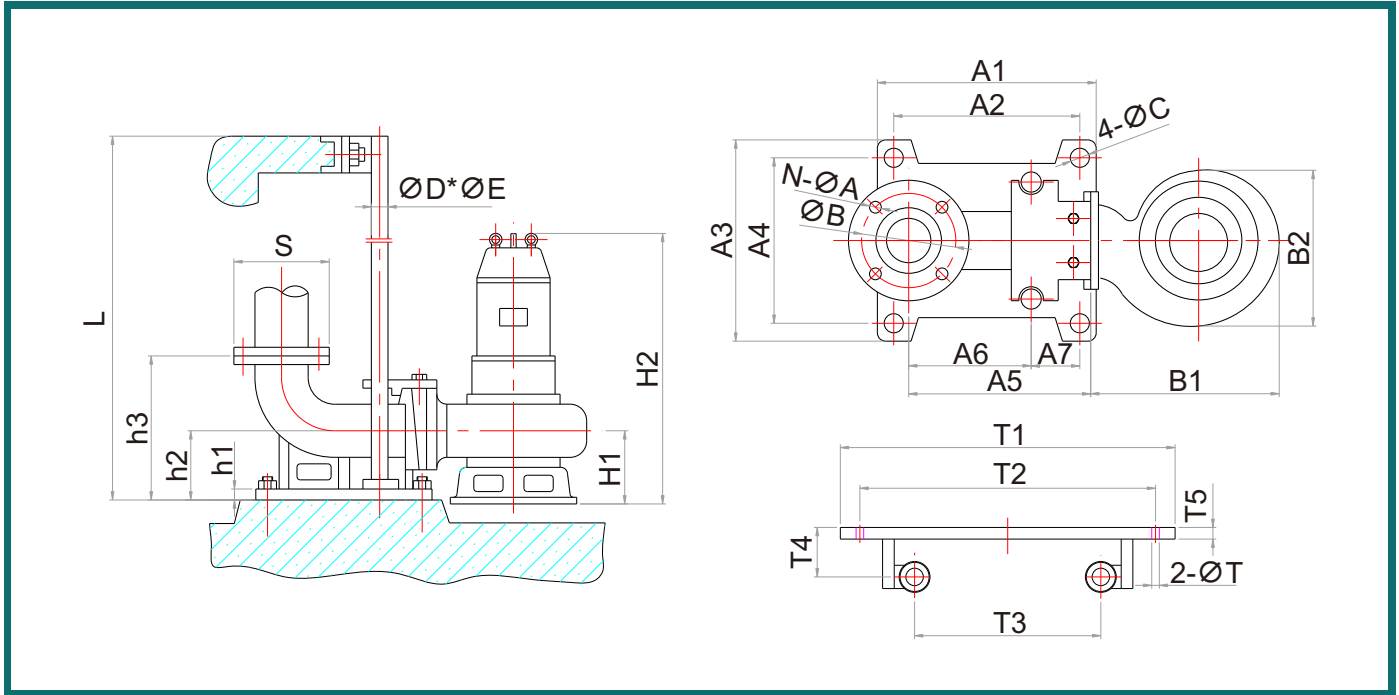


Model	Q(L/min)	0	350	680	1350	1670	2000	2170	2350
	Q(m³/h)	0	20	40	80	100	120	130	140
EFPD150/100-20-11	H(m)	32	29	26	22	20	17	12	12
EFPD150/100-30-15		43	39	36	32	30	27	23	23
EFPD150/120-15-11		32	29	26	22	20	17	12	12
EFPD150/120-25-15		43	39	36	32	30	27	23	23



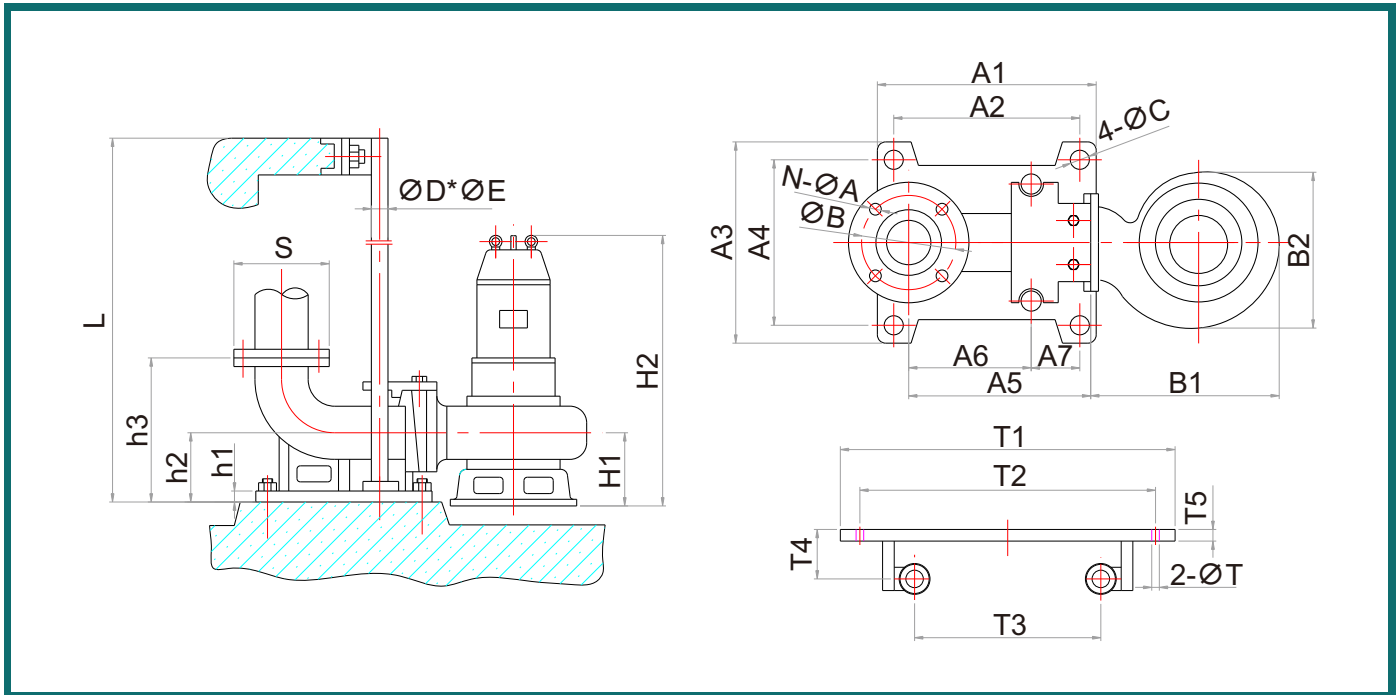
Model	Q(L/min)	0	680	1670	2350	3000	3400	3700	5000
	Q(m³/h)	0	40	100	140	180	200	220	300
EFPD200/180-11-11	H(m)	27	22	19	17	15	12	10	/
EFPD200/180-15-15		32	29	25	23	20	18	15	/
EFPD200/180-18-18.5		29	25.5	22	20	18	16	15	8
EFPD200/200-20-22		34	30	26	24	22.5	39	36	19
EFPD150/100-36-18.5		49	43	36	20	3	/	/	/
EFPD150/100-40-22		54	46	41	33	5	/	/	/

Dimension



Model	Dimensions(mm)																									
	N-ØA	ØB	4-ØC	ØD*ØE	H1	H2	h1	h2	h3	S	A1	A2	A3	A4	A5	A6	A7	B1	B2	T1	T2	T3	T4	T5	2-ØT	
EFPD50/20-70-15	4-Ø14	Ø110	4-Ø16	Ø26.5*Ø32	130	850	12	130	210	140	210	166	160	140	230	155	25	370	320	265	220	100	70	20	2-Ø12	
EFPD50/20-80-18.5	4-Ø14	Ø110	4-Ø16	Ø26.5*Ø32	135	920	12	130	210	140	210	166	160	140	230	155	25	440	360	265	220	100	70	20	2-Ø12	
EFPD50/20-90-22	4-Ø14	Ø110	4-Ø16	Ø26.5*Ø32	135	950	12	130	210	140	210	166	160	140	230	155	25	440	360	265	220	100	70	20	2-Ø12	
EFPD65/30-40-11	4-Ø14	Ø130	4-Ø16	Ø26.5*Ø32	130	810	12	150	245	160	235	185	200	175	260	175	40	370	320	275	240	130	70	20	2-Ø12	
EFPD65/30-60-15	4-Ø14	Ø130	4-Ø16	Ø26.5*Ø32	130	850	12	150	245	160	235	185	200	175	260	175	40	370	320	275	240	130	70	20	2-Ø12	
EFPD65/30-68-18.5	4-Ø14	Ø130	4-Ø16	Ø26.5*Ø32	135	920	12	150	245	160	235	185	200	175	260	175	40	440	360	275	240	130	70	20	2-Ø12	
EFPD65/30-75-22	4-Ø14	Ø130	4-Ø16	Ø26.5*Ø32	135	950	12	150	245	160	235	185	200	175	260	175	40	440	360	275	240	130	70	20	2-Ø12	
EFPD80/60-30-11	4-Ø18	Ø150	4-Ø16	Ø42*Ø47	160	850	15	170	280	190	270	210	230	195	300	192	50	375	320	315	270	150	80	20	2-Ø12	
EFPD80/60-40-15	4-Ø18	Ø150	4-Ø16	Ø42*Ø47	160	890	12	170	280	190	270	210	230	195	300	192	50	375	320	315	270	150	80	20	2-Ø12	
EFPD80/60-45-18.5	4-Ø18	Ø150	4-Ø16	Ø42*Ø47	180	970	12	170	280	190	270	210	230	195	300	192	50	400	360	315	270	150	80	20	2-Ø12	
EFPD80/60-50-22	4-Ø18	Ø150	4-Ø16	Ø42*Ø47	175	1000	12	170	280	190	270	210	230	195	300	192	50	400	360	315	270	150	80	20	2-Ø12	

Dimension



Model	Dimensions(mm)																									
	N-ØA	ØB	4-ØC	ØD*ØE	H1	H2	h1	h2	h3	S	A1	A2	A3	A4	A5	A6	A7	B1	B2	T1	T2	T3	T4	T5	2-ØT	
EFPD100/80-25-11	4-Ø18	Ø170	4-Ø20	Ø42*Ø47	160	850	15	200	340	210	320	256	270	230	355	233	60	375	320	360	305	170	90	20	2-Ø12	
EFPD100/80-35-15	4-Ø18	Ø170	4-Ø20	Ø42*Ø47	160	887	15	200	340	210	320	256	270	230	355	233	60	375	320	360	305	170	90	20	2-Ø12	
EFPD100/80-40-18.5	4-Ø18	Ø170	4-Ø20	Ø42*Ø47	173	971	15	200	340	210	320	256	270	230	355	233	60	407	360	360	305	170	90	20	2-Ø12	
EFPD100/80-45-22	4-Ø18	Ø170	4-Ø20	Ø42*Ø47	173	1001	15	200	340	210	320	256	270	230	355	233	60	407	360	360	305	170	90	20	2-Ø12	
EFPD150/100-20-11	8-Ø18	Ø225	4-Ø20	Ø42*Ø47	171	859	18	180	350	265	486	370	300	260	415	255	56	380	323	465	400	205	80	15	2-Ø16	
EFPD150/100-30-15	8-Ø18	Ø225	4-Ø20	Ø42*Ø47	171	899	18	180	350	265	486	370	300	260	415	255	56	380	323	465	400	205	80	15	2-Ø16	
EFPD150/120-15-11	8-Ø18	Ø225	4-Ø20	Ø42*Ø47	171	859	18	180	350	265	486	370	300	260	415	255	56	380	323	465	400	205	80	15	2-Ø16	
EFPD150/120-25-15	8-Ø18	Ø225	4-Ø20	Ø42*Ø47	171	899	18	180	350	265	486	370	300	260	415	255	56	380	323	465	400	205	80	15	2-Ø16	
EFPD200/180-11-11	8-Ø18	Ø280	4-Ø20	Ø42*Ø47	185	882	20	220	444	320	626	490	390	350	537	375	56	424	358	530	465	260	83	18	2-Ø16	
EFPD200/180-15-15	8-Ø18	Ø280	4-Ø20	Ø42*Ø47	185	922	20	220	444	320	626	490	390	350	537	375	56	424	358	530	465	260	83	18	2-Ø16	
EFPD200/180-18-18.5	8-Ø18	Ø280	4-Ø20	Ø42*Ø47	185	974	20	220	444	320	626	490	390	350	537	375	56	424	358	530	465	260	83	18	2-Ø16	
EFPD200/200-20-22	8-Ø18	Ø280	4-Ø20	Ø42*Ø47	185	1004	20	220	444	320	626	490	390	350	537	375	56	424	358	530	465	260	83	18	2-Ø16	
EFPD150/100-36-18.5	8-Ø18	Ø225	4-Ø20	Ø42*Ø47	185	981	18	180	350	265	486	370	300	260	415	255	56	366	320	465	400	205	80	15	2-Ø16	
EFPD150/100-40-22	8-Ø18	Ø225	4-Ø20	Ø42*Ø47	185	1011	18	180	350	265	486	370	300	260	415	255	56	366	320	465	400	205	80	15	2-Ø16	



EFPD

Performance Range

- Flow rate up to 4650 m³/h
- Head up to 120 m

Application Limits

- 5 m maximum immersion depth
- Liquid temperature +35 °C
- Ambient temperature up to +40 °C

Installation And Use

The EFPD series pumps are basic submersible sewage pumps with channel impellers. There is a wide product lineup that can be easily installed in combination with auto-coupling rail systems or use free-standing with a flexible hose or flange connection. With excellent reliability and durability, the pump must be completely submerged in water when working. It can run continuously for a long time. Therefore, they contribute to stable equipment operation in pumping stations and water treatment plants, and help greatly reduce maintenance costs.

These pumps have been actively used in many water treatment plants, pumping stations, flood control facilities and water parks. When manufactured according to ETAN's unique seawater-resistant specifications, these pumps can be reliably used to draw seawater from shipyards and power plants. In short, the EFPD series reflects our years of experience and expertise, so it can be applied to various fields and applications.

Construction

Pump Body: Cast iron
 Impeller: Channel impeller in cast iron
 Motor Bracket: Cast iron
 Motor Shaft: Stainless steel
 Mechanical Seal: ≤5.5kW, use Sic-Sic and Sic-Graphite;
 >5.5kW, use Sic-Sic and Sic-Alloy.
 Electric Motor: High efficiency three-phase 380/400V-50Hz-4/6Pole.
 Insulation: Class F.
 Protection: IP X8.

Technical Data

No.	Model	Power		Votalge	Speed	Max.head	Max.flow	Size	Solids Passage
		kW	HP			m	m³/h	inch	mm
1	EFPD80/80-13-5.5	5.5	7.5	380V/50Hz	1450/4P	20	130	3"	45
2	EFPD100/110-10-5.5	5.5	7.5	380V/50Hz	1450/4P	19	150	4"	45
3	EFPD80/80-20-7.5	7.5	10	380V/50Hz	1450/4P	23	150	3"	45
4	EFPD100/100-15-7.5	7.5	10	380V/50Hz	1450/4P	25	170	4"	45
5	EFPD100/100-25-11	11	15	380V/50Hz	1450/4P	35	150	4"	35
6	EFPD100/100-30-15	15	22	380V/50Hz	1450/4P	48	170	4"	35
7	EFPD100/100-35-18.5	18.5	25	380V/50Hz	1450/4P	45	130	4"	35
8	EFPD100/100-40-22	22	30	380V/50Hz	1450/4P	49	200	4"	35
9	EFPD100/120-45-30	30	40	380V/50Hz	1450/4P	55	240	4"	37
10	EFPD100/120-50-37	37	50	380V/50Hz	1450/4P	59	240	4"	37
11	EFPD100/100-57-45	45	60	380V/50Hz	1450/4P	69	230	4"	37
12	EFPD100/100-65-55	55	75	380V/50Hz	1450/4P	77	230	4"	37
13	EFPD100/120-75-75	75	100	380V/50Hz	1450/4P	86	260	4"	39
14	EFPD100/120-85-90	90	125	380V/50Hz	1450/4P	96	240	4"	39
15	EFPD100/100-100-110	110	150	380V/50Hz	1450/4P	110	255	4"	39
16	EFPD150/150-7-5.5	5.5	7.5	380V/50Hz	1450/4P	20	190	6"	51
17	EFPD150/145-9-7.5	7.5	10	380V/50Hz	1450/4P	17	210	6"	51
18	EFPD150/180-11-11	11	15	380V/50Hz	1450/4P	21	240	6"	74
19	EFPD150/200-15-15	15	22	380V/50Hz	1450/4P	26	250	6"	74
20	EFPD150/180-20-18.5	18.5	25	380V/50Hz	1450/4P	28	330	6"	71
21	EFPD150/200-22-22	22	30	380V/50Hz	1450/4P	32	350	6"	71
22	EFPD150/180-30-30	30	40	380V/50Hz	1450/4P	43	350	6"	41
23	EFPD150/200-35-37	37	50	380V/50Hz	1450/4P	45	336	6"	41
24	EFPD150/200-40-45	45	60	380V/50Hz	1450/4P	54	340	6"	41
25	EFPD150/180-50-55	55	75	380V/50Hz	1450/4P	69	290	6"	41
26	EFPD150/200-60-75	75	100	380V/50Hz	1450/4P	75	370	6"	41
27	EFPD150/200-70-90	90	125	380V/50Hz	1450/4P	85	360	6"	41
28	EFPD150/180-80-110	110	150	380V/50Hz	1450/4P	89	360	6"	41
29	EFPD150/200-90-132	110	150	380V/50Hz	1450/4P	97	550	6"	41
30	EFPD200/250-6-7.5	7.5	10	380V/50Hz	1450/4P	15.75	310	8"	85
31	EFPD200/300-7-11	11	15	380V/50Hz	1450/4P	20	400	8"	74
32	EFPD200/250-11-15	15	22	380V/50Hz	1450/4P	20.5	380	8"	74
33	EFPD200/250-15-18.5	18.5	25	380V/50Hz	1450/4P	24	440	8"	71
34	EFPD200/350-10-18.5	18.5	25	380V/50Hz	1450/4P	25.2	440	8"	71
35	EFPD200/300-16-22	22	30	380V/50Hz	1450/4P	31.5	420	8"	71
36	EFPD200/250-22-30	30	40	380V/50Hz	1450/4P	36.75	400	8"	51
37	EFPD200/400-10-22	22	30	380V/50Hz	1450/4P	35	470	8"	51
38	EFPD200/300-28-37	37	50	380V/50Hz	1450/4P	40.95	525	8"	51
39	EFPD200/350-25-37	37	50	380V/50Hz	1450/4P	40.95	525	8"	51

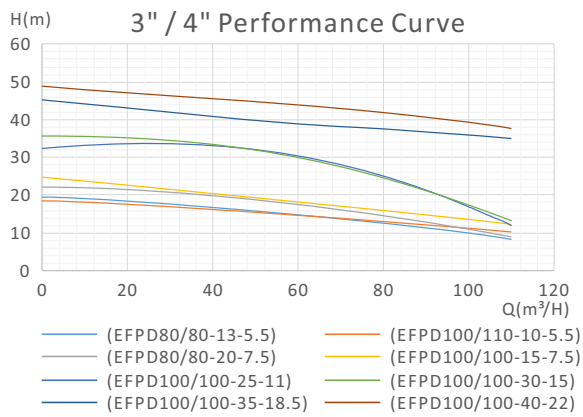
Technical Data

No.	Model	Power		Votalge	Speed	Max.head	Max.flow	Size	Solids Passage
		kW	HP			m	m ³ /h	inch	mm
40	EFPD200/300-32-45	45	60	380V/50Hz	1450/4P	48	480	8"	51
41	EFPD200/400-25-45	45	60	380V/50Hz	1450/4P	48	500	8"	51
42	EFPD200/300-40-55	55	75	380V/50Hz	1450/4P	55	500	8"	51
43	EFPD200/400-30-55	55	75	380V/50Hz	1450/4P	55	500	8"	51
44	EFPD200/350-45-75	75	100	380V/50Hz	1450/4P	63	480	8"	51
45	EFPD200/300-60-90	90	125	380V/50Hz	1450/4P	73.5	480	8"	51
46	EFPD200/400-50-90	90	125	380V/50Hz	1450/4P	71.4	490	8"	51
47	EFPD200/300-65-110	110	150	380V/50Hz	1450/4P	81.9	480	8"	51
48	EFPD200/400-75-132	132	180	380V/50Hz	1450/4P	92.4	580	8"	51
49	EFPD200/400-85-160	160	220	380V/50Hz	1450/4P	110	470	8"	51
50	EFPD200/400-90-185	185	250	380V/50Hz	1450/4P	120	700	8"	51
51	EFPD250/600-12-37	37	50	380V/50Hz	1450/4P	27	900	10"	64
52	EFPD250/600-15-45	45	60	380V/50Hz	1450/4P	32	1050	10"	64
53	EFPD250/600-20-55	55	75	380V/50Hz	1450/4P	40	1150	10"	64
54	EFPD250/600-25-75	75	100	380V/50Hz	1450/4P	42	750	10"	70
55	EFPD250/600-30-90	90	125	380V/50Hz	1450/4P	49	1150	10"	70
56	EFPD250/600-40-110	110	150	380V/50Hz	1450/4P	53	1150	10"	70
57	EFPD250/600-50-132	132	180	380V/50Hz	1450/4P	68	870	10"	70
58	EFPD250/600-60-160	160	220	380V/50Hz	1450/4P	75	830	10"	70
59	EFPD300/650-5-18.5	18.5	25	380V/50Hz	1450/4P	15	760	12"	130
60	EFPD300/650-7-22	22	30	380V/50Hz	1450/4P	18	900	12"	130
61	EFPD300/800-7-30	30	40	380V/50Hz	1450/4P	25	1050	12"	80
62	EFPD300/1000-6-30	30	40	380V/50Hz	980/6P	15	1500	12"	80
63	EFPD300/800-9-37	37	50	380V/50Hz	1450/4P	27	1100	12"	80
64	EFPD300/800-12-45	45	60	380V/50Hz	1450/4P	35	1050	12"	80
65	EFPD300/800-15-55	55	75	380V/50Hz	1450/4P	33	1160	12"	80
66	EFPD300/800-20-75	75	100	380V/50Hz	1450/4P	38	1350	12"	85
67	EFPD300/800-25-90	90	125	380V/50Hz	1450/4P	42	1300	12"	83
68	EFPD300/1000-25-110	110	150	380V/50Hz	980/6P	45	1300	12"	83
69	EFPD300/800-36-132	132	180	380V/50Hz	1450/4P	53	1200	12"	83
70	EFPD300/800-40-160	160	220	380V/50Hz	1450/4P	62	1200	12"	83
71	EFPD300/900-40-185	185	250	380V/50Hz	1450/4P	70	1240	12"	83
72	EFPD300/1000-45-200	200	275	380V/50Hz	1450/4P	76	1300	12"	83
73	EFPD350/1200-4-30	30	40	380V/50Hz	980/6P	15	1280	14"	130
74	EFPD350/1000-6-37	37	50	380V/50Hz	1450/4P	21	1365	14"	100
75	EFPD350/1100-6-37	37	50	380V/50Hz	980/6P	20	1491	14"	130
76	EFPD350/1200-8-45	45	60	380V/50Hz	1450/4P	25	1400	14"	100
77	EFPD350/1000-10-55	55	75	380V/50Hz	1450/4P	27	1500	14"	100
78	EFPD350/1100-10-55	55	75	380V/50Hz	980/6P	25	1600	14"	140

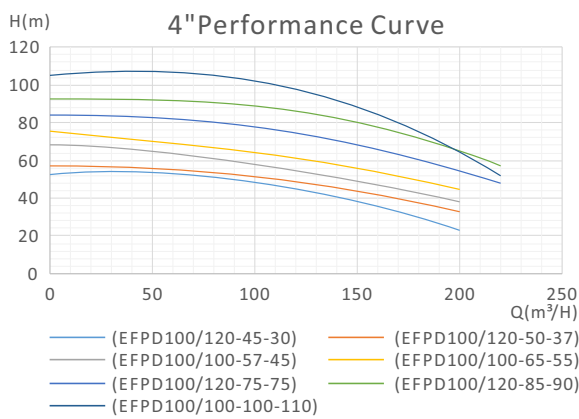
Technical Data

No.	Model	Power		Votalge	Speed	Max.head	Max.flow	Size	Solids Passage
		kW	HP			m	m ³ /h	inch	mm
79	EFPD350/1000-15-75	75	100	380V/50Hz	1450/4P	37	1360	14"	90
80	EFPD350/1500-12-75	75	100	380V/50Hz	980/6P	29	1680	14"	148
81	EFPD350/1200-18-90	90	125	380V/50Hz	980/6P	30	1650	14"	148
82	EFPD350/1300-20-110	110	150	380V/50Hz	1450/4P	42	1400	14"	92
83	EFPD350/1100-28-132	132	180	380V/50Hz	1450/4P	49	1400	14"	148
84	EFPD350/1100-38-185	185	250	380V/50Hz	1450/4P	52	1600	14"	148
85	EFPD350/1600-16-110	110	150	380V/50Hz	980/6P	22	3050	14"	148
86	EFPD350/1500-20-132	132	180	380V/50Hz	980/6P	30	3000	14"	148
87	EFPD350/1200-35-160	160	220	380V/50Hz	980/6P	43	2500	14"	148
88	EFPD350/1300-35-200	200	275	380V/50Hz	980/6P	49	2500	14"	148
89	EFPD350/1500-36-250	250	340	380V/50Hz	1450/4P	59	2300	14"	148
90	EFPD400/1300-5-37	37	50	380V/50Hz	980/6P	18	1600	16"	130
91	EFPD400/1700-6-45	45	60	380V/50Hz	980/6P	19	1800	16"	140
92	EFPD400/1300-8-55	55	75	380V/50Hz	1450/4P	30	1600	16"	100
93	EFPD400/1500-8-55	55	75	380V/50Hz	980/6P	25	1700	16"	140
94	EFPD400/1300-13-75	75	100	380V/50Hz	1450/4P	37	1500	16"	90
95	EFPD400/1700-10-75	75	100	380V/50Hz	980/6P	25	1800	16"	148
96	EFPD400/1500-15-90	90	125	380V/50Hz	980/6P	37	1900	16"	148
97	EFPD400/2000-15-132	132	180	380V/50Hz	980/6P	28	3150	16"	148
98	EFPD400/1600-20-160	160	220	380V/50Hz	1450/4P	45	2000	16"	148
99	EFPD400/1600-22-160	160	220	380V/50Hz	980/6P	32	3150	16"	148
100	EFPD400/1600-25-185	185	250	380V/50Hz	1450/4P	48	2000	16"	148
101	EFPD400/1500-30-200	200	275	380V/50Hz	1450/4P	42	3400	16"	148
102	EFPD400/1800-30-250	250	340	380V/50Hz	1450/4P	56	2800	16"	148
103	EFPD500/2200-5-55	55	75	380V/50Hz	980/6P	70	2650	20"	140
104	EFPD500/2000-8-75	75	100	380V/50Hz	980/6P	76	2650	20"	140
105	EFPD500/2000-10-90	90	125	380V/50Hz	980/6P	15	3150	20"	140
106	EFPD500/2500-10-110	110	150	380V/50Hz	980/6P	21	3000	20"	140
107	EFPD500/2800-10-132	132	180	380V/50Hz	980/6P	20	3600	20"	140
108	EFPD500/2600-16-160	160	220	380V/50Hz	980/6P	25	3800	20"	140
109	EFPD500/3000-15-185	185	250	380V/50Hz	980/6P	27	4400	20"	140
110	EFPD500/3000-21-250	250	340	380V/50Hz	980/6P	25	4200	20"	140
111	EFPD600/3700-10-160	160	220	380V/50Hz	980/6P	37	4650	24"	140
112	EFPD600/3700-12-185	185	250	380V/50Hz	980/6P	29	3600	24"	140

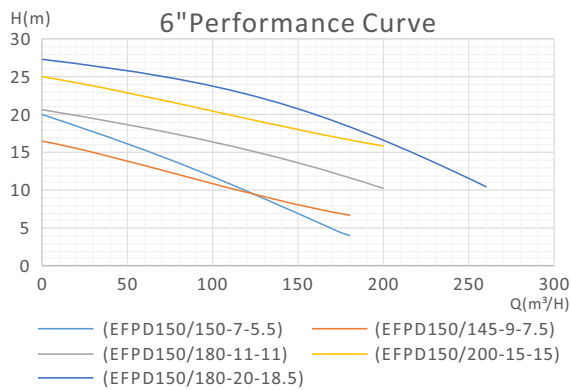
Hydraulic Performance Curves



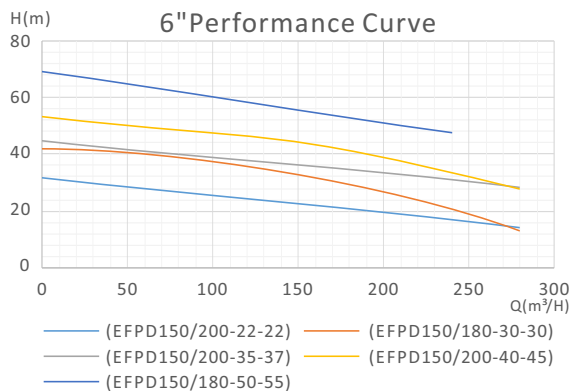
Model	Q(L/min)	0	350	680	1000	1350	1670	1850	2170
	Q(m³/h)	0	20	40	60	80	100	110	130
EFPD80/80-13-5.5	H(m)	20	18	16.5	15	13	10	8	/
EFPD100/110-10-5.5		19	17	16	14.5	13	11	10	2
EFPD80/80-20-7.5		23	21	19.7	18	15	10	9	2
EFPD100/100-15-7.5		25	23	19	18	16.5	15	10	2
EFPD100/100-25-11		35	33	31	29	27	25	19	8
EFPD100/100-30-15		48	45	42	40	32	30	29	20
EFPD100/100-35-18.5		45	43	41	39	37	36	35	22
EFPD100/100-40-22		49	47.5	46	44	42	40	37	20



Model	Q(L/min)	0	680	1350	2000	2670	2680	3400	4000
	Q(m³/h)	0	40	80	100	120	160	200	240
EFPD100/120-45-30	H(m)	55	52	50	48	46	38	20	2
EFPD100/120-50-37		59	55	52	51	50	42	30	2
EFPD100/100-57-45		69	65	60	58	55	48	36	/
EFPD100/100-65-55		77	71	67	65	61	54	43	/
EFPD100/120-75-75		86	83	78	76	75	69	53	10
EFPD100/120-85-90		96	92	89	87	86	78	73	10
EFPD100/100-100-110		110	106	102	100	94	88	75	12

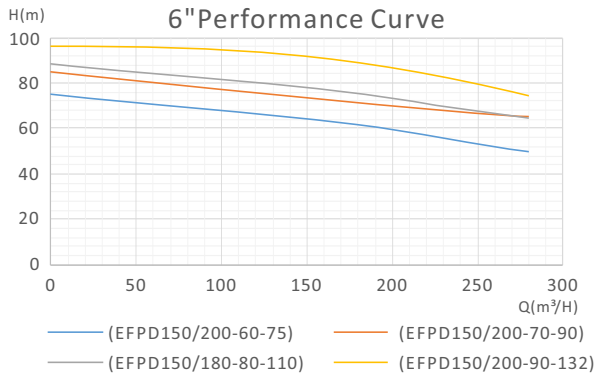


Model	Q(L/min)	0	680	1350	2000	2500	3000	3400	3700
	Q(m³/h)	0	40	80	120	150	180	200	220
EFPD150/150-7-5.5	H(m)	20	17	14	10	7	4	/	/
EFPD150/145-9-7.5		17	13.5	11.5	10	9	6	/	/
EFPD150/180-11-11		21	19	17.3	15.5	13	11.5	10	4
EFPD150/200-15-15		26	23	21	20	18.5	16.9	15	6
EFPD150/180-20-18.5		28	26	24	22.5	20	19	17.5	15

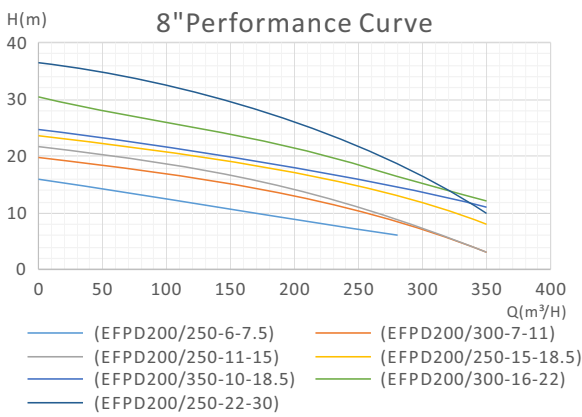


Model	Q(L/min)	0	680	1350	1670	2000	2680	3400	4000
	Q(m³/h)	0	40	80	100	120	160	200	240
EFPD150/200-22-22	H(m)	32	30	27	24.5	22.5	22	19	13
EFPD150/180-30-30		43	41	38	36	30	28	24	11
EFPD150/200-35-37		45	43	40	38	36	35	33	24
EFPD150/200-40-45		54	52	49	47	43	41	36	26
EFPD150/180-50-55		69	65	61	57	52	50	49	45

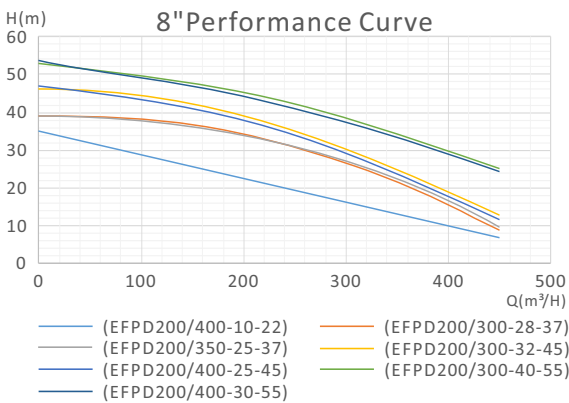
Hydraulic Performance Curves



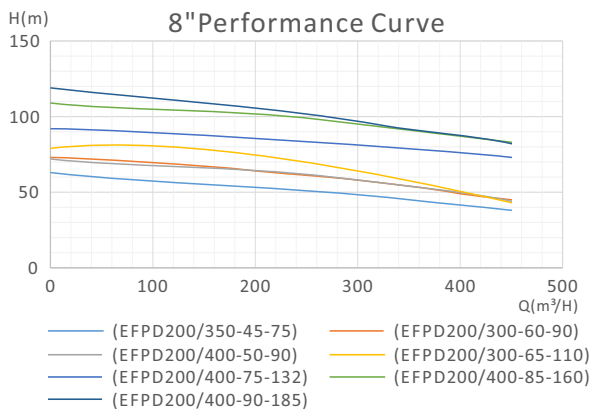
Model	Q(L/min)	0	1000	2670	3000	4000	4680	5000	5850
	Q(m³/h)	0	60	120	180	240	280	300	350
EFPD150/200-60-75	H(m)	75	72	67	62	55	50	17	3
EFPD150/200-70-90	H(m)	85	80	77	72.5	67	66	59	24
EFPD150/180-80-110	H(m)	89	85	83	80	70	64	64	25
EFPD150/200-90-132	H(m)	97	95.5	93.5	91	78	76.5	73	58



Model	Q(L/min)	0	1350	2680	3400	4200	5000	5850	6680
	Q(m³/h)	0	80	160	200	250	300	350	400
EFPD200/250-6-7.5	H(m)	15.75	13	11	9	6	2	/	/
EFPD200/300-7-11	H(m)	20	18	14.5	13	10	7	2	/
EFPD200/250-11-15	H(m)	22.5	19	16	14	11	8	2	/
EFPD200/250-15-18.5	H(m)	24	21	18.5	17	15	10	8	3
EFPD200/350-10-18.5	H(m)	25	22	19	18	16	14	10	3
EFPD200/300-16-22	H(m)	31.5	26	23	21.5	19	16	10.5	4
EFPD200/250-22-30	H(m)	36.75	33	29	22	15	11	4	/

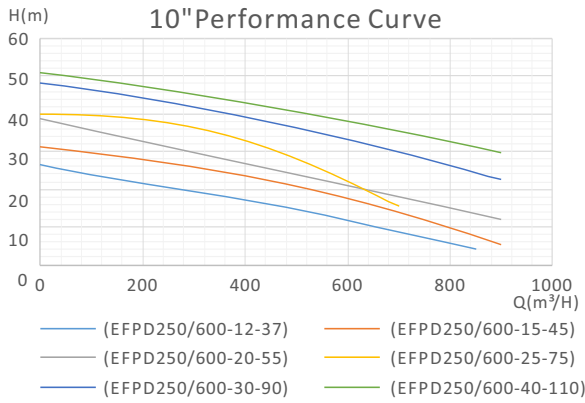


Model	Q(L/min)	0	1670	3400	5000	5850	6680	7500	8350
	Q(m³/h)	0	100	200	300	350	400	450	500
EFPD200/400-10-22	H(m)	35	29	23	14	12	10	7	/
EFPD200/300-28-37	H(m)	41	36.5	33.5	28	25	16	6	2
EFPD200/350-25-37	H(m)	41	43	40	27	25	19	6	2
EFPD200/300-32-45	H(m)	48	43	38	32	28	25	7	/
EFPD200/400-25-45	H(m)	48	43	38	34	30	25	8	2
EFPD200/300-40-55	H(m)	55	49	44	40	37	32	22	2
EFPD200/400-30-55	H(m)	55	49	44	37	34	32	22	2

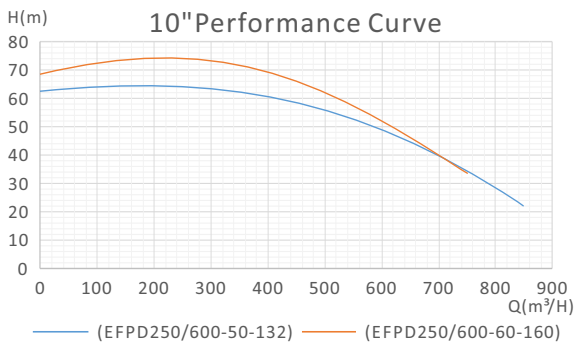


Model	Q(L/min)	0	1670	3340	5000	5850	6680	7500	8000
	Q(m³/h)	0	100	200	300	350	400	450	480
EFPD200/350-45-75	H(m)	63	60	53.5	50	45	40	39	3
EFPD200/300-60-90	H(m)	73.5	70	63	61	53	51	43	4
EFPD200/400-50-90	H(m)	71.4	70	63	61	53	51	43	5
EFPD200/300-65-110	H(m)	81.9	78	72	67	62	59	35	4
EFPD200/400-75-132	H(m)	92.4	88.5	85	81	77.5	76	73	25
EFPD200/400-85-160	H(m)	110	104	102	97	91	88	8	/
EFPD200/400-90-185	H(m)	120	112	104	96	90	88	20	18

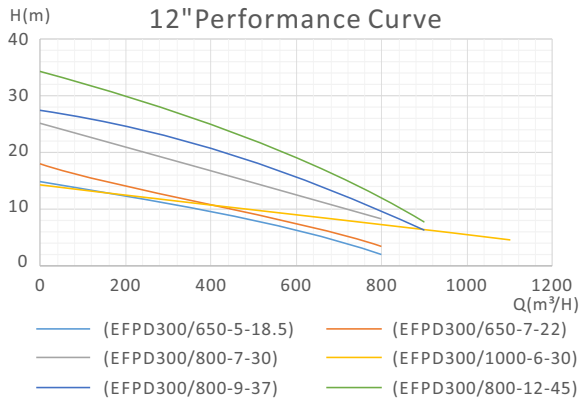
Hydraulic Performance Curves



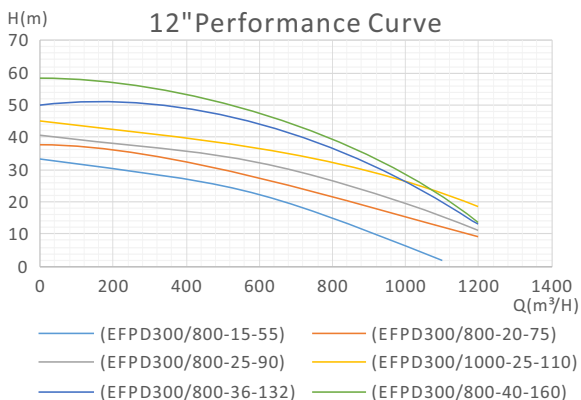
Model	Q(L/min)	0	3400	6680	10000	11690	13360	14200	15000
	Q(m³/h)	0	200	400	600	700	800	850	900
EFPD250/600-12-37	H(m)	27	21	17	13	9	5	4	/
EFPD250/600-15-45	H(m)	32	28	24	18	14	6	7	6
EFPD250/600-20-55	H(m)	40	32	26.5	22	19	15	13	10
EFPD250/600-25-75	H(m)	42	37	33	25	9	/	/	/
EFPD250/600-30-90	H(m)	49	44	39	33	31	26	24	22
EFPD250/600-40-110	H(m)	53	46	42.5	40	35	33	31	29



Model	Q(L/min)	0	3400	6680	10000	11690	13360	14200	15000
	Q(m³/h)	0	200	400	600	700	800	850	900
EFPD250/600-50-132	H(m)	68	62.5	57.5	53	47	25	8	/
EFPD250/600-60-160	H(m)	75	70	66	61	56	5	/	/

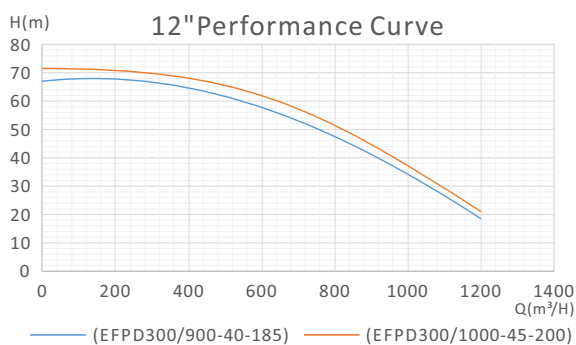


Model	Q(L/min)	0	3400	6680	10850	13360	15000	16700	21700
	Q(m³/h)	0	200	400	650	800	900	1000	1300
EFPD300/650-5-18.5	H(m)	15	12	9.8	5	2	/	/	/
EFPD300/650-7-22	H(m)	18	14	10.5	8	3	/	/	/
EFPD300/800-7-30	H(m)	25	21	16	12	8	3	/	/
EFPD300/1000-6-30	H(m)	15	13	11.3	9.5	8	7	6.5	4
EFPD300/800-9-37	H(m)	27	25	20	15	10	6	/	/
EFPD300/800-12-45	H(m)	35	32	28	20	16	12	10	/

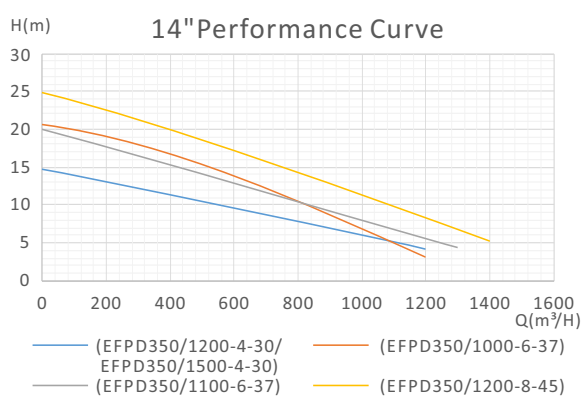


Model	Q(L/min)	0	3400	6680	10000	13360	16700	18370	20000
	Q(m³/h)	0	200	400	600	800	1000	1100	1200
EFPD300/800-15-55	H(m)	33	31	27	22	16	6	3	/
EFPD300/800-20-75	H(m)	38	36	31	28	23	17	13	8
EFPD300/800-25-90	H(m)	42	38	35	32	28	20	17	9
EFPD300/1000-25-110	H(m)	45	43	41	37	31	26	22	19
EFPD300/800-36-132	H(m)	53	50	47	43	38	33	19	8
EFPD300/800-40-160	H(m)	62	56	52	47	41	32	23	7

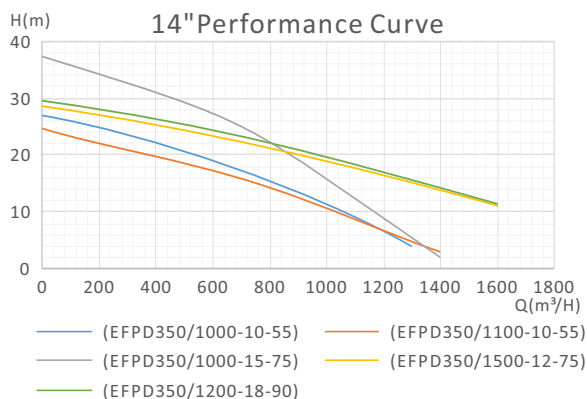
Hydraulic Performance Curves



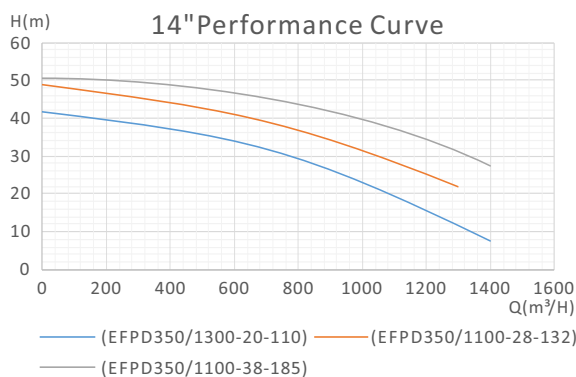
Model	Q(L/min)	0	3400	6680	10000	15000	16700	18370	20000
	Q(m³/h)	0	200	400	600	900	1000	1100	1200
EFPD300/900-40-185	H(m)	70	67	59	56	45	43	33	7
EFPD300/1000-45-200	H(m)	76	70	64	58	52	48	34	8



Model	Q(L/min)	0	3400	6680	13360	16700	18370	20000	21700
	Q(m³/h)	0	200	400	800	1000	1100	1200	1300
EFPD350/1200-4-30	H(m)	15	13	11	8	6	5	4	/
EFPD350/1000-6-37	H(m)	21	19	16	11	7	5	3	/
EFPD350/1100-6-37	H(m)	20	18	15	11	8	7	6	4
EFPD350/1200-8-45	H(m)	25	23	19	14	12	11	9	7

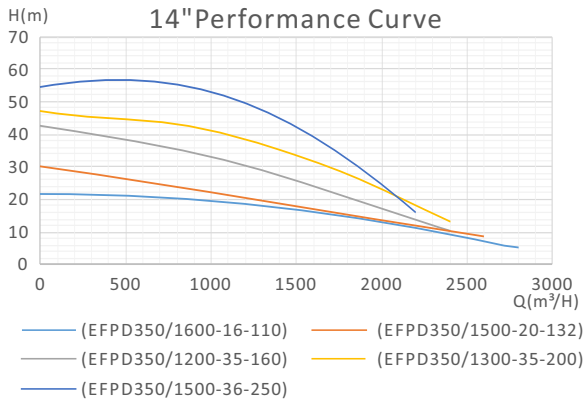


Model	Q(L/min)	0	3400	8350	16700	18370	20000	21700	25000
	Q(m³/h)	0	200	500	1000	1100	1200	1300	1500
EFPD350/1000-10-55	H(m)	27	24	19	11	9	6	4	1
EFPD350/1100-10-55	H(m)	25	22	18	14	10	6	5	3
EFPD350/1000-15-75	H(m)	37	35	27	16	14	8	5	/
EFPD350/1500-12-75	H(m)	29	27	23	19	18	17	16	12
EFPD350/1200-18-90	H(m)	30	28	24	20	19	18	16	10

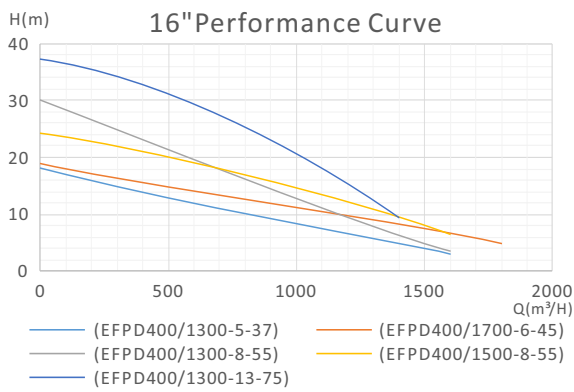


Model	Q(L/min)	0	3400	6680	10000	13360	18370	20000	23380
	Q(m³/h)	0	200	400	600	800	1100	1200	1300
EFPD350/1300-20-110	H(m)	42	40	37	33	29	24	20	2
EFPD350/1100-28-132	H(m)	49	47	44	41	36	30	19	3
EFPD350/1100-38-185	H(m)	52	50	48	46	44	38	32	20

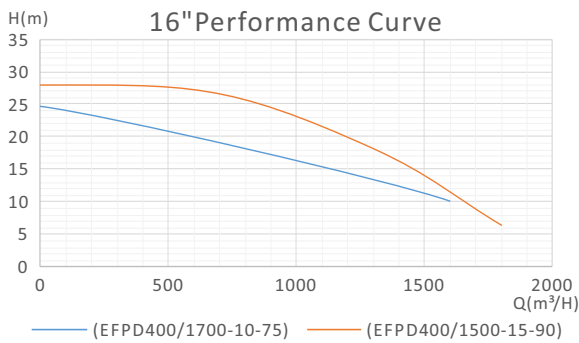
Hydraulic Performance Curves



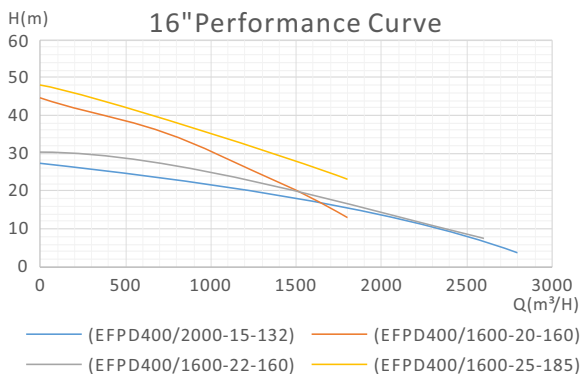
Model	Q(L/min)	0	6680	13360	20040	25000	30000	36740	/
	Q(m³/h)	0	400	800	1200	1500	1800	2200	/
EFPD350/1600-16-110	H(m)	22	21	20	18	16	16	11	/
EFPD350/1500-20-132		30	27	23	21	20	16	11	/
EFPD350/1200-35-160		43	40	35	30	26	21	14	/
EFPD350/1300-35-200		49	45	40	38	32	30	20	/
EFPD350/1500-36-250		59	55	51	48	36	32	5	/



Model	Q(L/min)	0	3400	6680	16700	21700	25000	28390	30000
	Q(m³/h)	0	200	400	1000	1300	1500	1700	1800
EFPD400/1300-5-37	H(m)	18	16	14	8	5	3	/	/
EFPD400/1700-6-45		19	21.5	16	12	9	7	6	3
EFPD400/1300-8-55		30	29	23	13	8	5	/	/
EFPD400/1500-8-55		25	47	21	15	11	8	2	/
EFPD400/1300-13-75		37	57	33	20	13	10	/	/

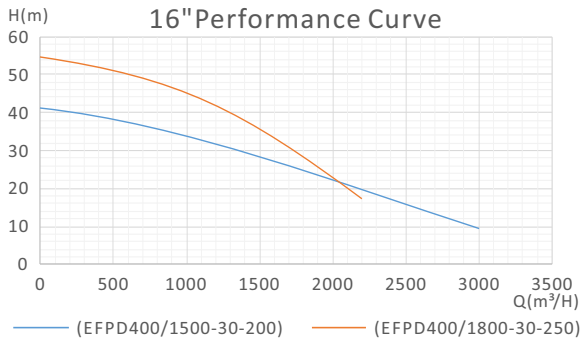


Model	Q(L/min)	0	3400	6680	13360	20000	25000	28390	30000
	Q(m³/h)	0	200	400	800	1200	1500	1700	1800
EFPD400/1700-10-75	H(m)	25	23	22	18	15	12	10	1
EFPD400/1500-15-90		29	28	27	25	20	18	15	3

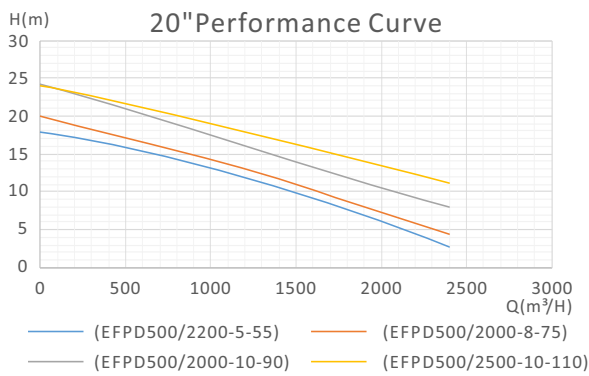


Model	Q(L/min)	0	3400	6680	13360	20000	26700	33400	36740
	Q(m³/h)	0	200	400	800	1200	1600	2000	2200
EFPD400/2000-15-132	H(m)	28	28	25	22	20	18	15	11
EFPD400/1600-20-160		45	43	39	33	27	21	4	/
EFPD400/1600-22-160		32	30	28	25	23.5	22	15	11
EFPD400/1600-25-185		48	46	44	38	33	27	/	/

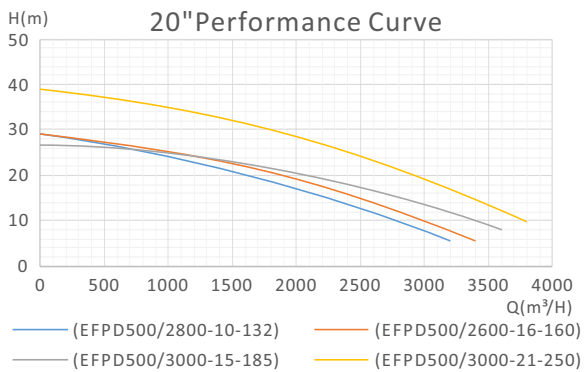
Hydraulic Performance Curves



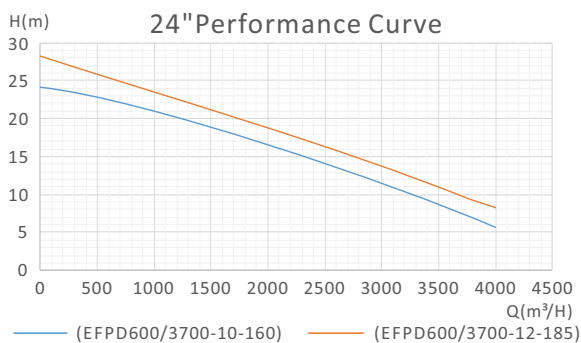
Model	Q(L/min)	0	3340	6680	16700	25000	33400	38400	46760
	Q(m³/h)	0	200	400	1000	1500	2000	2300	2800
EFPD400/1500-30-200	H(m)	42	40	39	33	30	22	21	15
EFPD400/1800-30-250	H(m)	56	54	52	44	40	29	15	3



Model	Q(L/min)	0	8350	16700	25000	33400	36740	41750	50000
	Q(m³/h)	0	500	1000	1500	2000	2200	2500	3000
EFPD500/2200-5-55	H(m)	18	16	13	10	6	4	3	/
EFPD500/2000-8-75	H(m)	21	17	14	11	8	6	3.5	/
EFPD500/2000-10-90	H(m)	25	21	17	14	11	9	7	3
EFPD500/2500-10-110	H(m)	25	21	19	16	13	12	11	4

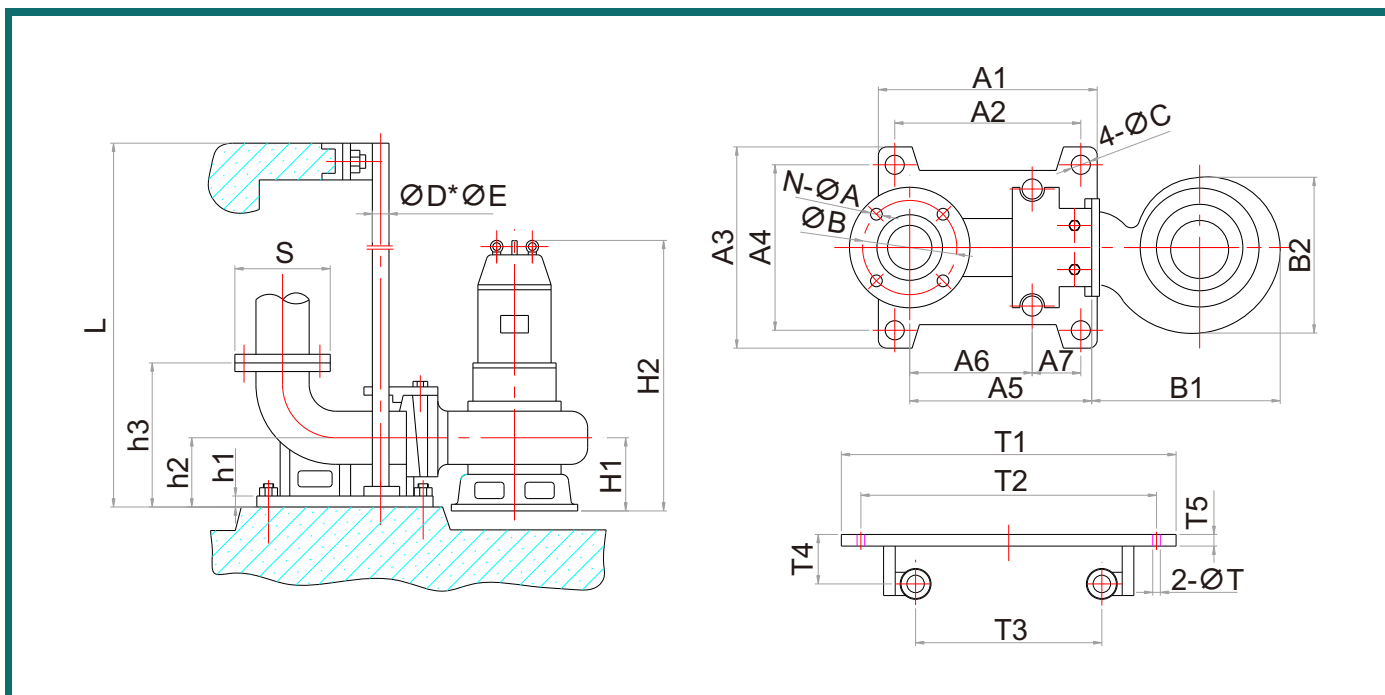


Model	Q(L/min)	0	6680	16700	23380	33400	46760	50000	58450
	Q(m³/h)	0	400	1000	1400	2000	2800	3000	3500
EFPD500/2800-10-132	H(m)	30	27	24	21	17	12	11	3
EFPD500/2600-16-160	H(m)	30	28	25	22	19	16	13	4
EFPD500/3000-15-185	H(m)	28	26	24	23	21	16	15.5	10
EFPD500/3000-21-250	H(m)	41	38	35	29	27	21	13	3



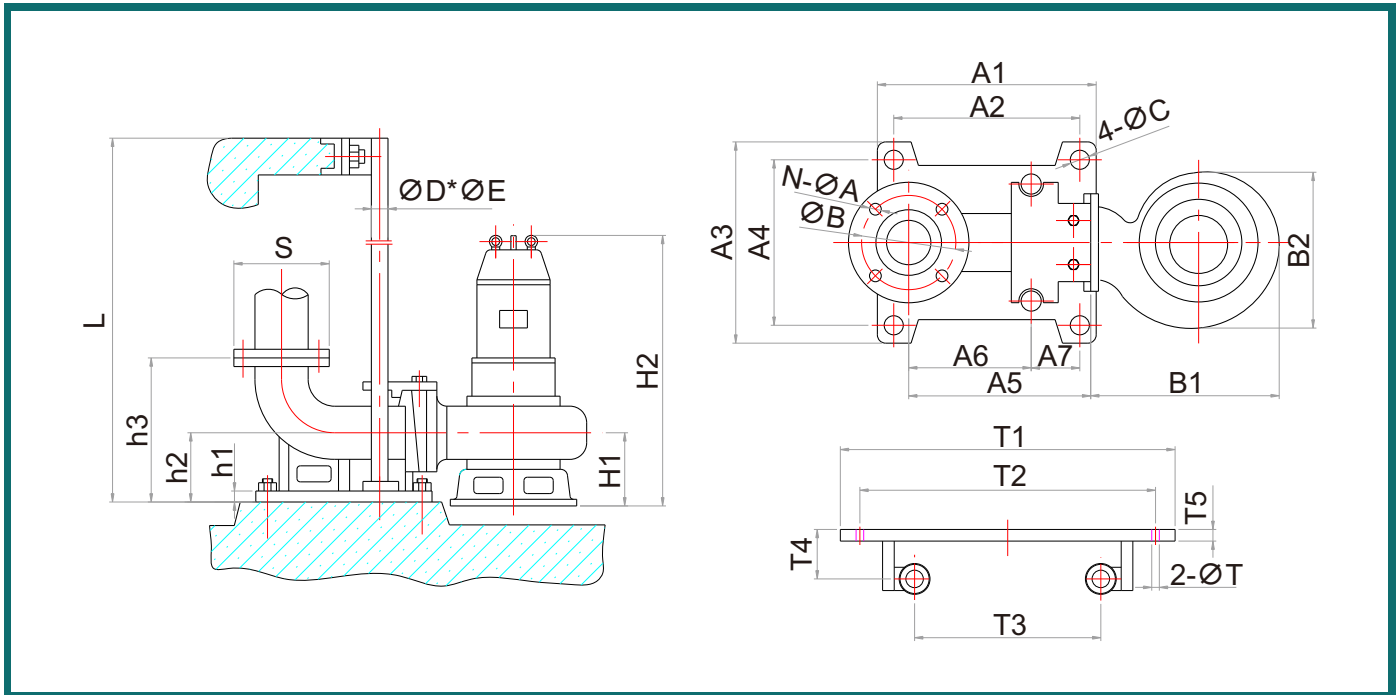
Model	Q(L/min)	0	6680	16700	33400	50000	53440	61790	66800
	Q(m³/h)	0	400	1000	2000	3000	3200	3700	4000
EFPD600/3700-10-160	H(m)	25	24	21	17	13.5	17	11	6
EFPD600/3700-12-185	H(m)	30	27	25	19	14.5	19	13	9

Dimension



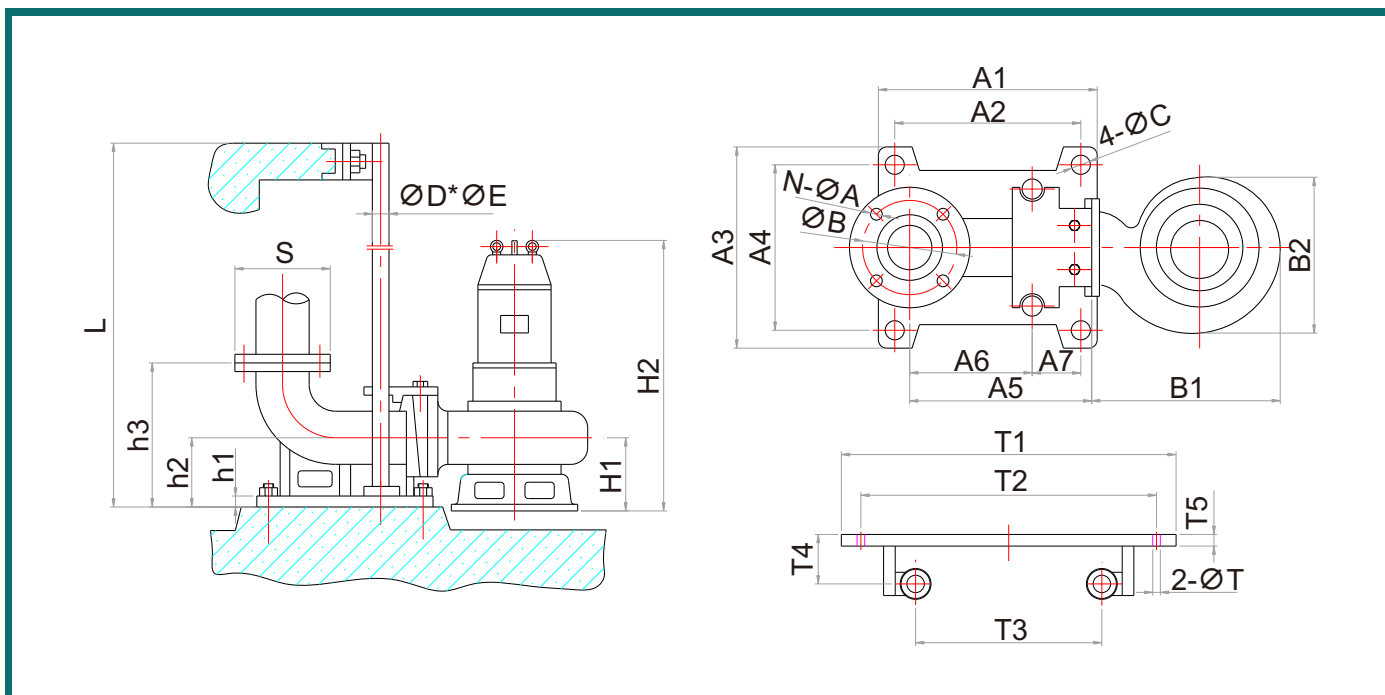
Model	Dimensions(mm)																								
	N- $\varnothing A$	$\varnothing B$	4- $\varnothing C$	$\varnothing D^* \varnothing E$	H1	H2	h1	h2	h3	S	A1	A2	A3	A4	A5	A6	A7	B1	B2	T1	T2	T3	T4	T5	2- $\varnothing T$
EFPD80/80-13-5.5	4- $\varnothing 18$	$\varnothing 150$	4- $\varnothing 16$	$\varnothing 42^* \varnothing 47$	175	800	12	170	280	190	270	210	230	195	300	192	50	407	360	315	270	150	80	20	2- $\varnothing 12$
EFPD100/110-10-5.5	4- $\varnothing 18$	$\varnothing 170$	4- $\varnothing 20$	$\varnothing 42^* \varnothing 47$	180	800	15	200	340	210	320	256	270	230	355	233	60	407	360	360	305	170	90	20	2- $\varnothing 12$
EFPD80/80-20-7.5	4- $\varnothing 18$	$\varnothing 150$	4- $\varnothing 16$	$\varnothing 42^* \varnothing 47$	180	860	12	170	280	190	270	210	230	195	300	192	50	407	360	315	270	150	80	20	2- $\varnothing 12$
EFPD100/100-15-7.5	4- $\varnothing 18$	$\varnothing 170$	4- $\varnothing 20$	$\varnothing 42^* \varnothing 47$	180	860	15	200	340	210	320	256	270	230	355	233	60	400	360	360	305	170	90	20	2- $\varnothing 12$
EFPD100/100-25-11	4- $\varnothing 18$	$\varnothing 170$	4- $\varnothing 20$	$\varnothing 42^* \varnothing 47$	185	910	15	200	340	210	320	256	270	230	355	233	60	480	410	360	305	170	90	20	2- $\varnothing 12$
EFPD100/100-30-15	4- $\varnothing 18$	$\varnothing 170$	4- $\varnothing 20$	$\varnothing 42^* \varnothing 47$	185	950	15	200	340	210	320	256	270	230	355	233	60	480	410	360	305	170	90	20	2- $\varnothing 12$
EFPD100/100-35-18.5	4- $\varnothing 18$	$\varnothing 170$	4- $\varnothing 20$	$\varnothing 42^* \varnothing 47$	190	1205	15	200	340	210	320	256	270	230	355	233	60	550	450	360	305	170	90	20	2- $\varnothing 12$
EFPD100/100-40-22	4- $\varnothing 18$	$\varnothing 170$	4- $\varnothing 20$	$\varnothing 42^* \varnothing 47$	190	1230	15	200	340	210	320	256	270	230	355	233	60	550	450	360	305	170	90	20	2- $\varnothing 12$
EFPD100/120-45-30	4- $\varnothing 18$	$\varnothing 170$	4- $\varnothing 20$	$\varnothing 42^* \varnothing 47$	272	1340	15	200	340	210	320	256	270	230	355	233	60	602	505	360	305	170	90	20	2- $\varnothing 12$
EFPD100/120-50-37	4- $\varnothing 18$	$\varnothing 170$	4- $\varnothing 20$	$\varnothing 42^* \varnothing 47$	272	1410	15	200	340	210	320	256	270	230	355	233	60	602	505	360	305	170	90	20	2- $\varnothing 12$
EFPD100/100-57-45	4- $\varnothing 18$	$\varnothing 170$	4- $\varnothing 20$	$\varnothing 42^* \varnothing 47$	270	1490	15	200	340	210	320	256	270	230	355	233	60	675	545	360	305	170	90	20	2- $\varnothing 12$
EFPD100/100-65-55	4- $\varnothing 18$	$\varnothing 170$	4- $\varnothing 20$	$\varnothing 42^* \varnothing 47$	270	1560	15	200	340	210	320	256	270	230	355	233	60	675	545	360	305	170	90	20	2- $\varnothing 12$
EFPD100/120-75-75	4- $\varnothing 18$	$\varnothing 170$	4- $\varnothing 20$	$\varnothing 42^* \varnothing 47$	150	1520	15	200	340	210	320	256	270	230	355	233	60	750	650	360	305	170	90	20	2- $\varnothing 12$
EFPD100/120-85-90	4- $\varnothing 18$	$\varnothing 170$	4- $\varnothing 20$	$\varnothing 42^* \varnothing 47$	150	1630	15	200	340	210	320	256	270	230	355	233	60	750	650	360	305	170	90	20	2- $\varnothing 12$
EFPD100/100-100-110	4- $\varnothing 18$	$\varnothing 170$	4- $\varnothing 20$	$\varnothing 42^* \varnothing 47$	150	1760	15	200	340	210	320	256	270	230	355	233	60	750	650	360	305	170	90	20	2- $\varnothing 12$

Dimension



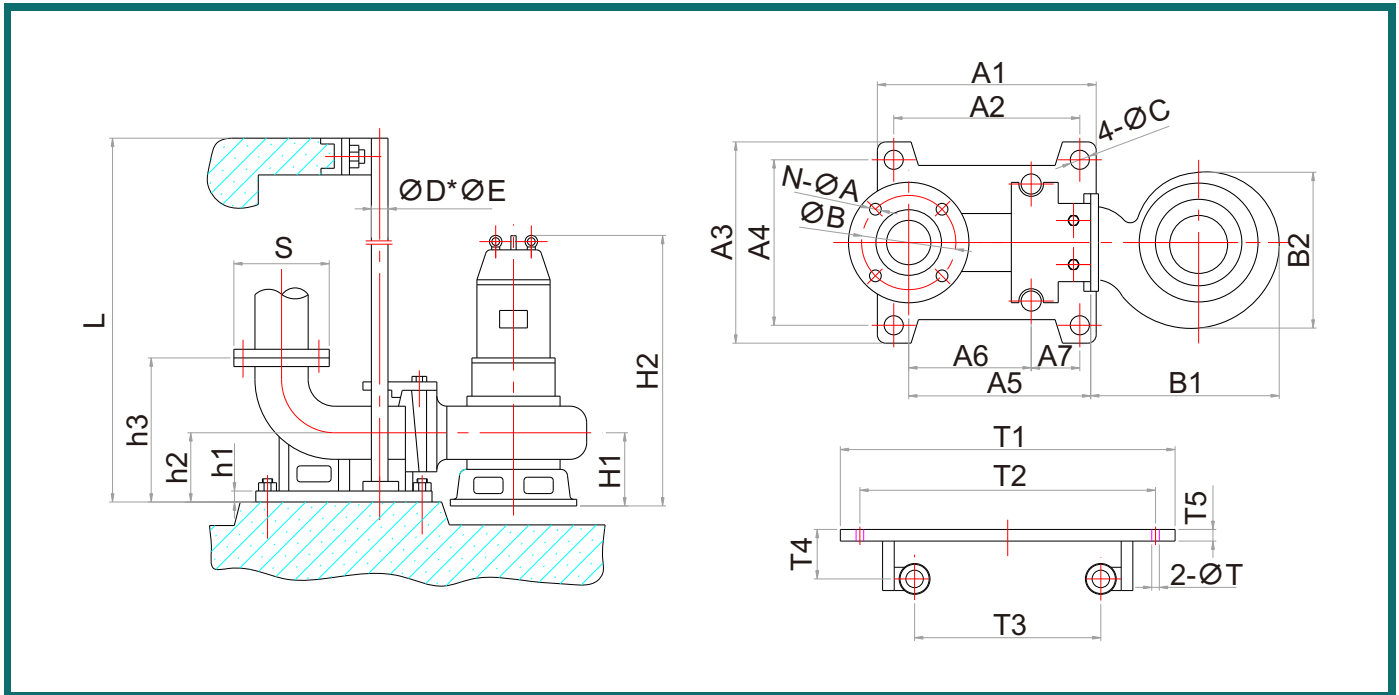
Model	Dimensions(mm)																								
	N- $\varnothing A$	$\varnothing B$	4- $\varnothing C$	$\varnothing D^* \varnothing E$	H1	H2	h1	h2	h3	S	A1	A2	A3	A4	A5	A6	A7	B1	B2	T1	T2	T3	T4	T5	2- $\varnothing T$
EFPD150/150-7-5.5	8- $\varnothing 18$	$\varnothing 225$	4- $\varnothing 20$	$\varnothing 42^* \varnothing 47$	185	820	18	180	350	265	486	370	300	260	415	255	56	400	310	465	400	205	80	15	2- $\varnothing 16$
EFPD150/145-9-7.5	8- $\varnothing 18$	$\varnothing 225$	4- $\varnothing 20$	$\varnothing 42^* \varnothing 47$	185	870	18	180	350	265	486	370	300	260	415	255	56	400	310	465	400	205	80	15	2- $\varnothing 16$
EFPD150/180-11-11	8- $\varnothing 18$	$\varnothing 225$	4- $\varnothing 20$	$\varnothing 42^* \varnothing 47$	206	939	18	180	350	265	486	370	300	260	415	255	56	525	420	465	400	205	80	15	2- $\varnothing 16$
EFPD150/200-15-15	8- $\varnothing 18$	$\varnothing 225$	4- $\varnothing 20$	$\varnothing 42^* \varnothing 47$	206	979	18	180	350	265	486	370	300	260	415	255	56	525	433	465	400	205	80	15	2- $\varnothing 16$
EFPD150/180-20-18.5	8- $\varnothing 18$	$\varnothing 225$	4- $\varnothing 20$	$\varnothing 42^* \varnothing 47$	223	1238	18	180	350	265	486	370	300	260	415	255	56	567	463	465	400	205	80	15	2- $\varnothing 16$
EFPD150/200-22-22	8- $\varnothing 18$	$\varnothing 225$	4- $\varnothing 20$	$\varnothing 42^* \varnothing 47$	223	1238	18	180	350	265	486	370	300	260	415	255	56	567	440	465	400	205	80	15	2- $\varnothing 16$
EFPD150/180-30-30	8- $\varnothing 18$	$\varnothing 225$	4- $\varnothing 20$	$\varnothing 42^* \varnothing 47$	236	1298	18	180	350	265	486	370	300	260	415	255	56	647	540	465	400	205	80	15	2- $\varnothing 16$
EFPD150/200-35-37	8- $\varnothing 18$	$\varnothing 225$	4- $\varnothing 20$	$\varnothing 42^* \varnothing 47$	236	1368	18	180	350	265	486	370	300	260	415	255	56	647	540	465	400	205	80	15	2- $\varnothing 16$
EFPD150/200-40-45	8- $\varnothing 18$	$\varnothing 225$	4- $\varnothing 20$	$\varnothing 42^* \varnothing 47$	236	1453	18	180	350	265	486	370	300	260	415	255	56	647	540	465	400	205	80	15	2- $\varnothing 16$
EFPD150/180-50-55	8- $\varnothing 18$	$\varnothing 225$	4- $\varnothing 20$	$\varnothing 42^* \varnothing 47$	236	1530	18	180	350	265	486	370	300	260	415	255	56	675	560	465	400	205	80	15	2- $\varnothing 16$
EFPD150/200-60-75	8- $\varnothing 18$	$\varnothing 225$	4- $\varnothing 20$	$\varnothing 42^* \varnothing 47$	258	1609	18	180	350	265	486	370	300	260	415	255	56	764	629	465	400	205	80	15	2- $\varnothing 16$
EFPD150/200-70-90	8- $\varnothing 18$	$\varnothing 225$	4- $\varnothing 20$	$\varnothing 42^* \varnothing 47$	205	1660	15	290	485	265	370	282	340	310	410	245	56	680	540	465	400	205	80	15	2- $\varnothing 16$
EFPD150/180-80-110	8- $\varnothing 18$	$\varnothing 225$	4- $\varnothing 20$	$\varnothing 42^* \varnothing 47$	245	1796	15	290	485	265	370	282	340	310	410	245	56	732	643	465	400	205	80	15	2- $\varnothing 16$
EFPD150/200-90-132	8- $\varnothing 18$	$\varnothing 225$	4- $\varnothing 20$	$\varnothing 42^* \varnothing 47$	203	1795	18	180	350	265	486	370	300	260	415	255	56	884	703	465	400	205	80	15	2- $\varnothing 16$

Dimension



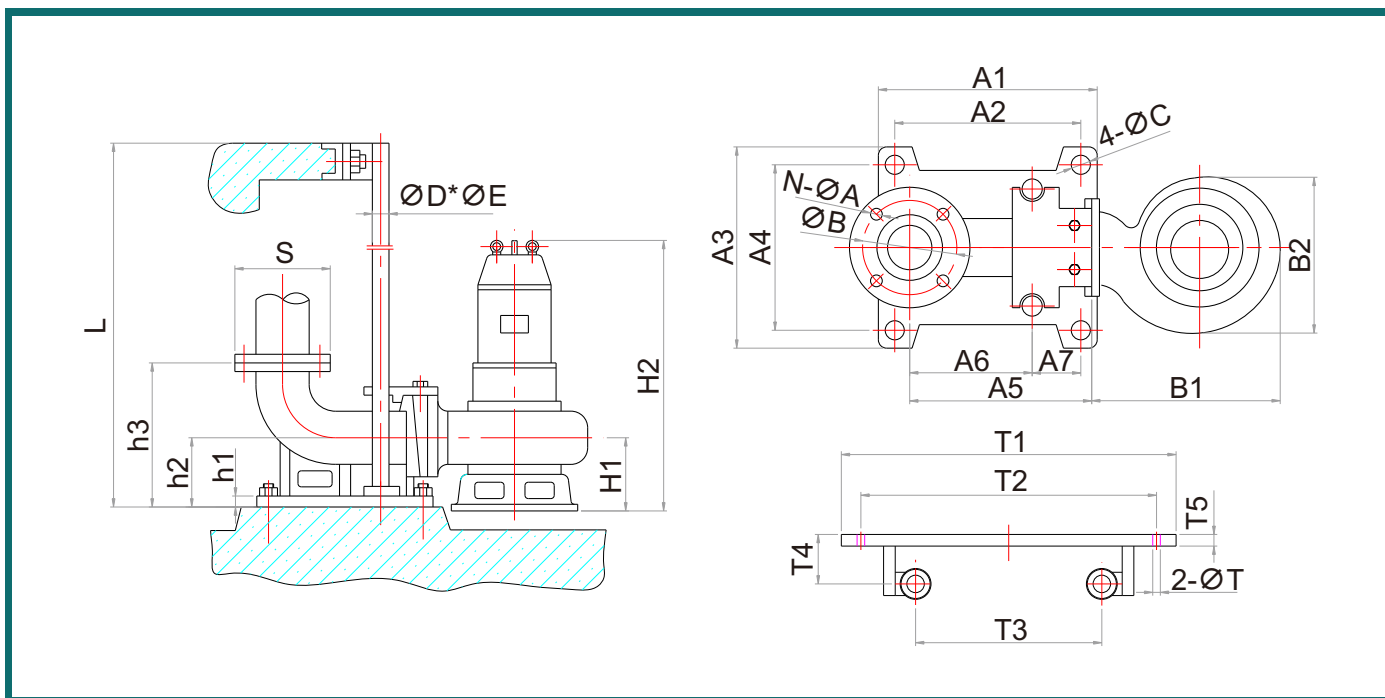
Model	Dimensions(mm)																								
	N- $\varnothing A$	$\varnothing B$	4- $\varnothing C$	$\varnothing D^* \varnothing E$	H1	H2	h1	h2	h3	S	A1	A2	A3	A4	A5	A6	A7	B1	B2	T1	T2	T3	T4	T5	2- $\varnothing T$
EFPD200/250-6-7.5	8- $\varnothing 18$	$\varnothing 280$	4- $\varnothing 20$	$\varnothing 42^* \varnothing 47$	203	896	20	220	444	320	626	490	390	350	537	375	46	447	360	530	465	260	83	18	2- $\varnothing 16$
EFPD200/300-7-11	8- $\varnothing 18$	$\varnothing 280$	4- $\varnothing 20$	$\varnothing 42^* \varnothing 47$	206	979	20	220	444	320	626	490	390	350	537	375	46	525	420	530	465	260	83	18	2- $\varnothing 16$
EFPD200/250-11-15	8- $\varnothing 18$	$\varnothing 280$	4- $\varnothing 20$	$\varnothing 42^* \varnothing 47$	206	979	20	220	444	320	626	490	390	350	537	375	46	525	420	530	465	260	83	18	2- $\varnothing 16$
EFPD200/250-15-18.5	8- $\varnothing 18$	$\varnothing 280$	4- $\varnothing 20$	$\varnothing 42^* \varnothing 47$	225	1250	20	220	444	320	626	490	390	350	537	375	46	570	440	530	465	260	83	18	2- $\varnothing 16$
EFPD200/350-10-18.5	8- $\varnothing 18$	$\varnothing 280$	4- $\varnothing 20$	$\varnothing 42^* \varnothing 47$	223	1238	20	220	444	320	626	490	390	350	537	375	46	567	440	530	465	260	83	18	2- $\varnothing 16$
EFPD200/300-16-22	8- $\varnothing 18$	$\varnothing 280$	4- $\varnothing 20$	$\varnothing 42^* \varnothing 47$	223	1264	20	220	444	320	626	490	390	350	537	375	46	567	440	530	465	260	83	18	2- $\varnothing 16$
EFPD200/250-22-30	8- $\varnothing 18$	$\varnothing 280$	4- $\varnothing 20$	$\varnothing 42^* \varnothing 47$	253	1321	20	220	444	320	626	490	390	350	537	375	46	648	541	530	465	260	83	18	2- $\varnothing 16$
EFPD200/400-10-22	8- $\varnothing 18$	$\varnothing 280$	4- $\varnothing 20$	$\varnothing 42^* \varnothing 47$	223	1264	20	220	444	320	626	490	390	350	537	375	46	567	440	530	465	260	83	18	2- $\varnothing 16$
EFPD200/300-28-37	8- $\varnothing 18$	$\varnothing 280$	4- $\varnothing 20$	$\varnothing 42^* \varnothing 47$	253	1390	20	220	444	320	626	490	390	350	537	375	46	648	533	530	465	260	83	18	2- $\varnothing 16$
EFPD200/350-25-37	8- $\varnothing 18$	$\varnothing 280$	4- $\varnothing 20$	$\varnothing 42^* \varnothing 47$	253	1390	20	220	444	320	626	490	390	350	537	375	46	648	533	530	465	260	83	18	2- $\varnothing 16$
EFPD200/300-32-45	8- $\varnothing 18$	$\varnothing 280$	4- $\varnothing 20$	$\varnothing 42^* \varnothing 47$	253	1478	20	220	444	320	626	490	390	350	537	375	46	650	533	530	465	260	83	18	2- $\varnothing 16$
EFPD200/400-25-45	8- $\varnothing 18$	$\varnothing 280$	4- $\varnothing 20$	$\varnothing 42^* \varnothing 47$	253	1478	20	220	444	320	626	490	390	350	537	375	46	650	533	530	465	260	83	18	2- $\varnothing 16$
EFPD200/300-40-55	8- $\varnothing 18$	$\varnothing 280$	4- $\varnothing 20$	$\varnothing 42^* \varnothing 47$	253	1547	20	220	444	320	626	490	390	350	537	375	46	648	533	530	465	260	83	18	2- $\varnothing 16$
EFPD200/400-30-55	8- $\varnothing 18$	$\varnothing 280$	4- $\varnothing 20$	$\varnothing 42^* \varnothing 47$	253	1547	20	220	444	320	626	490	390	350	537	375	46	648	533	530	465	260	83	18	2- $\varnothing 16$
EFPD200/350-45-75	8- $\varnothing 18$	$\varnothing 280$	4- $\varnothing 20$	$\varnothing 42^* \varnothing 47$	258	1609	20	220	444	320	626	490	390	350	537	375	46	764	629	530	465	260	83	18	2- $\varnothing 16$
EFPD200/300-60-90	8- $\varnothing 18$	$\varnothing 280$	4- $\varnothing 20$	$\varnothing 42^* \varnothing 47$	258	1684	20	220	444	320	626	490	390	350	537	375	46	764	629	530	465	260	83	18	2- $\varnothing 16$
EFPD200/400-50-90	8- $\varnothing 18$	$\varnothing 280$	4- $\varnothing 20$	$\varnothing 42^* \varnothing 47$	258	1684	20	220	444	320	626	490	390	350	537	375	46	764	629	530	465	260	83	18	2- $\varnothing 16$
EFPD200/300-65-110	8- $\varnothing 18$	$\varnothing 280$	4- $\varnothing 20$	$\varnothing 42^* \varnothing 47$	258	1814	20	220	444	320	626	490	390	350	537	375	46	764	629	530	465	260	83	18	2- $\varnothing 16$
EFPD200/400-75-132	8- $\varnothing 18$	$\varnothing 280$	4- $\varnothing 20$	$\varnothing 42^* \varnothing 47$	203	1795	20	220	444	320	626	490	390	350	537	375	46	884	703	530	465	260	83	18	2- $\varnothing 16$
EFPD200/400-85-160	8- $\varnothing 18$	$\varnothing 280$	4- $\varnothing 20$	$\varnothing 42^* \varnothing 47$	203	1795	20	220	444	320	626	490	390	350	537	375	46	884	703	530	465	260	83	18	2- $\varnothing 16$
EFPD200/400-90-185	8- $\varnothing 18$	$\varnothing 280$	4- $\varnothing 20$	$\varnothing 42^* \varnothing 47$	203	1926	20	220	444	320	626	490	390	350	537	375	46	884	703	530	465	260	83	18	2- $\varnothing 16$

Dimension



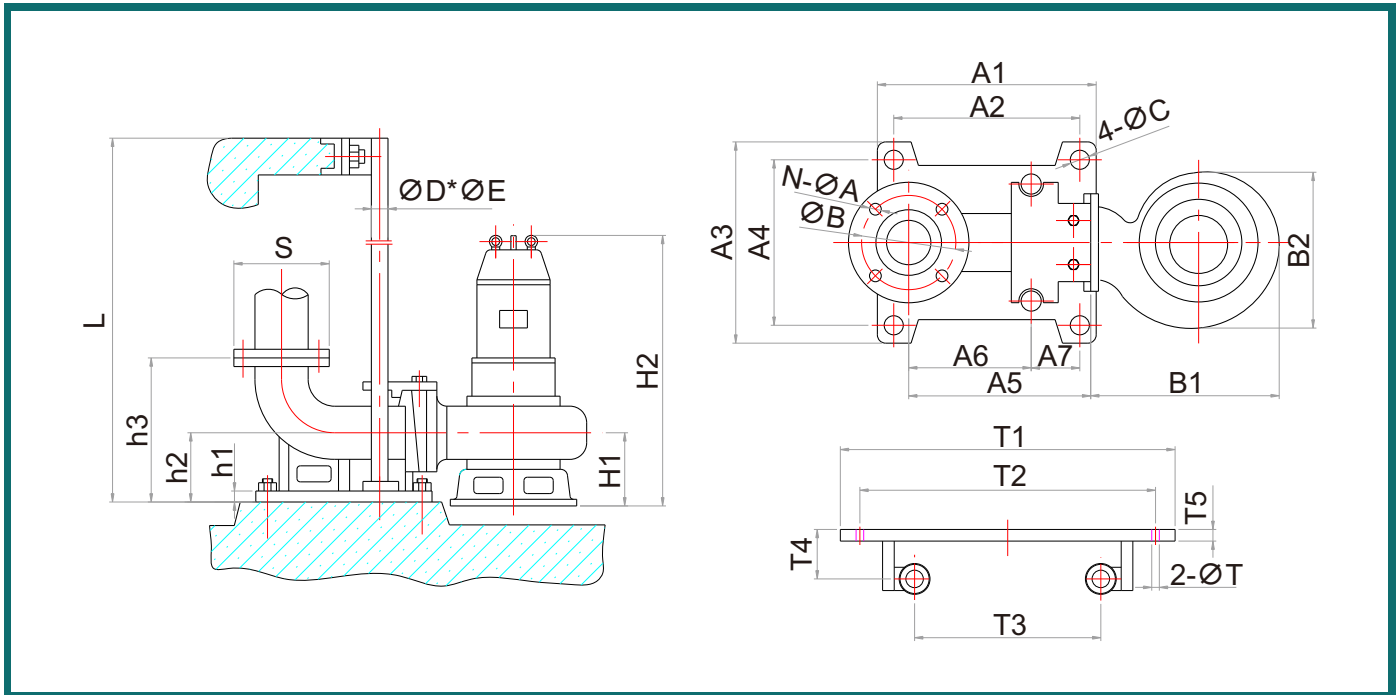
Model	Dimensions(mm)																								
	N-ØA	ØB	4-ØC	ØD*ØE	H1	H2	h1	h2	h3	S	A1	A2	A3	A4	A5	A6	A7	B1	B2	T1	T2	T3	T4	T5	2-ØT
EFPD250/600-12-37	12-Ø22	Ø350	4-Ø30	Ø52*Ø60	276	1420	20	250	500	395	666	480	480	420	555	350	55	740	613	595	525	305	95	20	2-Ø16
EFPD250/600-15-45	12-Ø22	Ø350	4-Ø30	Ø52*Ø60	276	1504	20	250	500	395	666	480	480	420	555	350	55	740	613	595	525	305	95	20	2-Ø16
EFPD250/600-20-55	12-Ø22	Ø350	4-Ø30	Ø52*Ø60	276	1573	20	250	500	395	666	480	480	420	555	350	55	740	613	595	525	305	95	20	2-Ø16
EFPD250/600-25-75	12-Ø22	Ø350	4-Ø30	Ø52*Ø60	294	1647	20	250	500	395	666	480	480	420	555	350	55	807	671	595	525	305	95	20	2-Ø16
EFPD250/600-30-90	12-Ø22	Ø350	4-Ø30	Ø52*Ø60	294	1720	20	250	500	395	666	480	480	420	555	350	55	807	671	595	525	305	95	20	2-Ø16
EFPD250/600-40-110	12-Ø22	Ø350	4-Ø30	Ø52*Ø60	294	1852	20	250	500	395	666	480	480	420	555	350	55	807	671	595	525	305	95	20	2-Ø16
EFPD250/600-50-132	12-Ø22	Ø350	4-Ø30	Ø52*Ø60	309	1928	20	250	500	395	666	480	480	420	555	350	55	889	720	595	525	305	95	20	2-Ø16
EFPD250/600-60-160	12-Ø22	Ø350	4-Ø30	Ø52*Ø60	309	1928	20	250	500	395	666	480	480	420	555	350	55	889	720	595	525	305	95	20	2-Ø16
EFPD300/650-5-18.5	12-Ø22	Ø400	4-Ø30	Ø52*Ø60	244	1294	30	300	600	445	760	570	560	500	625	420	52	712	616	630	560	340	95	20	2-Ø16
EFPD300/650-7-22	12-Ø22	Ø400	4-Ø30	Ø52*Ø60	244	1320	30	300	600	445	760	570	560	500	625	420	52	712	616	630	560	340	95	20	2-Ø16
EFPD300/800-7-30	12-Ø22	Ø400	4-Ø30	Ø52*Ø60	243	1347	30	300	600	445	760	570	560	500	625	420	52	710	618	630	560	340	95	20	2-Ø16
EFPD300/1000-6-30	12-Ø22	Ø400	4-Ø30	Ø52*Ø60	243	1347	30	300	600	445	760	570	560	500	625	420	52	710	618	630	560	340	95	20	2-Ø16
EFPD300/800-9-37	12-Ø22	Ø400	4-Ø30	Ø52*Ø60	243	1417	30	300	600	445	760	570	560	500	625	420	52	710	618	630	560	340	95	20	2-Ø16
EFPD300/800-12-45	12-Ø22	Ø400	4-Ø30	Ø52*Ø60	243	1500	30	300	600	445	760	570	560	500	625	420	52	710	616	630	560	340	95	20	2-Ø16
EFPD300/800-15-55	12-Ø22	Ø400	4-Ø30	Ø52*Ø60	243	1571	30	300	600	445	760	570	560	500	625	420	52	710	616	630	560	340	95	20	2-Ø16
EFPD300/800-20-75	12-Ø22	Ø400	4-Ø30	Ø52*Ø60	243	1620	30	300	600	445	760	570	560	500	625	420	52	760	618	630	560	340	95	20	2-Ø16
EFPD300/800-25-90	12-Ø22	Ø400	4-Ø30	Ø52*Ø60	243	1694	30	300	600	445	760	570	560	500	625	420	52	760	618	630	560	340	95	20	2-Ø16
EFPD300/1000-25-110	12-Ø22	Ø400	4-Ø30	Ø52*Ø60	243	1824	30	300	600	445	760	570	560	500	625	420	52	760	618	630	560	340	95	20	2-Ø16
EFPD300/800-36-132	12-Ø22	Ø400	4-Ø30	Ø52*Ø60	243	1896	30	300	600	445	760	570	560	500	625	420	52	865	787	630	560	340	95	20	2-Ø16
EFPD300/800-40-160	12-Ø22	Ø400	4-Ø30	Ø52*Ø60	243	1896	30	300	600	445	760	570	560	500	625	420	52	865	787	630	560	340	95	20	2-Ø16
EFPD300/900-40-185	12-Ø22	Ø400	4-Ø30	Ø52*Ø60	243	2027	30	300	600	445	760	570	560	500	625	420	52	865	787	630	560	340	95	20	2-Ø16
EFPD300/1000-45-200	12-Ø22	Ø400	4-Ø30	Ø52*Ø60	243	2027	30	300	600	445	760	570	560	500	625	420	52	865	787	630	560	340	95	20	2-Ø16

Dimension



Model	Dimensions(mm)																								
	N- $\varnothing A$	$\varnothing B$	4- $\varnothing C$	$\varnothing D * \varnothing E$	H1	H2	h1	h2	h3	S	A1	A2	A3	A4	A5	A6	A7	B1	B2	T1	T2	T3	T4	T5	2- $\varnothing T$
EFPD350/1200-4-30	16- $\varnothing 22$	$\varnothing 460$	4- $\varnothing 30$	$\varnothing 52 * \varnothing 60$	268	1500	35	350	700	505	860	660	620	560	716	490	63	907	787	630	560	340	95	20	2- $\varnothing 16$
EFPD350/1000-6-37	16- $\varnothing 22$	$\varnothing 460$	4- $\varnothing 30$	$\varnothing 52 * \varnothing 60$	270	1300	18	368	927	505	700	400	505	420	593	410	53	860	730	630	560	340	95	20	2- $\varnothing 16$
EFPD350/1100-6-37	16- $\varnothing 22$	$\varnothing 460$	4- $\varnothing 30$	$\varnothing 52 * \varnothing 60$	268	1500	35	350	700	505	860	660	620	560	716	490	63	907	787	630	560	340	95	20	2- $\varnothing 16$
EFPD350/1200-8-45	16- $\varnothing 22$	$\varnothing 460$	4- $\varnothing 30$	$\varnothing 52 * \varnothing 60$	273	1554	35	350	700	505	860	660	620	560	716	490	63	870	730	630	560	340	95	20	2- $\varnothing 16$
EFPD350/1000-10-55	16- $\varnothing 22$	$\varnothing 460$	4- $\varnothing 30$	$\varnothing 52 * \varnothing 60$	275	1630	35	350	700	505	860	660	620	560	716	490	63	870	730	630	560	340	95	20	2- $\varnothing 16$
EFPD350/1100-10-55	16- $\varnothing 22$	$\varnothing 460$	4- $\varnothing 30$	$\varnothing 52 * \varnothing 60$	268	1653	35	350	700	505	860	660	620	560	716	490	63	907	787	630	560	340	95	20	2- $\varnothing 16$
EFPD350/1000-15-75	16- $\varnothing 22$	$\varnothing 460$	4- $\varnothing 30$	$\varnothing 52 * \varnothing 60$	273	1685	35	350	700	505	860	660	620	560	716	490	63	866	730	630	560	340	95	20	2- $\varnothing 16$
EFPD350/1500-12-75	16- $\varnothing 22$	$\varnothing 460$	4- $\varnothing 30$	$\varnothing 52 * \varnothing 60$	273	1794	35	350	700	505	860	660	620	560	716	490	63	1000	892	630	560	340	95	20	2- $\varnothing 16$
EFPD350/1200-18-90	16- $\varnothing 22$	$\varnothing 460$	4- $\varnothing 30$	$\varnothing 52 * \varnothing 60$	273	1924	35	350	700	505	860	660	620	560	716	490	63	999	892	630	560	340	95	20	2- $\varnothing 16$
EFPD350/1300-20-110	16- $\varnothing 22$	$\varnothing 460$	4- $\varnothing 30$	$\varnothing 52 * \varnothing 60$	303	1932	35	350	700	505	860	660	620	560	716	490	63	920	790	630	560	340	95	20	2- $\varnothing 16$
EFPD350/1100-28-132	16- $\varnothing 22$	$\varnothing 460$	4- $\varnothing 30$	$\varnothing 52 * \varnothing 60$	273	1924	35	350	700	505	860	660	620	560	716	490	63	999	892	630	560	340	95	20	2- $\varnothing 16$
EFPD350/1100-38-185	16- $\varnothing 22$	$\varnothing 460$	4- $\varnothing 30$	$\varnothing 52 * \varnothing 60$	273	2055	35	350	700	505	860	660	620	560	716	490	63	999	897	630	560	340	95	20	2- $\varnothing 16$
EFPD350/1600-16-110	16- $\varnothing 22$	$\varnothing 460$	4- $\varnothing 30$	$\varnothing 52 * \varnothing 60$	273	1924	35	350	700	505	860	660	620	560	716	490	63	999	892	630	560	340	95	20	2- $\varnothing 16$
EFPD350/1500-20-132	16- $\varnothing 22$	$\varnothing 460$	4- $\varnothing 30$	$\varnothing 52 * \varnothing 60$	411	2218	35	350	700	505	860	660	620	560	716	490	63	1228	1060	630	560	340	95	20	2- $\varnothing 16$
EFPD350/1200-35-160	16- $\varnothing 22$	$\varnothing 460$	4- $\varnothing 30$	$\varnothing 52 * \varnothing 60$	411	2218	35	350	700	505	860	660	620	560	716	490	63	1228	1060	630	560	340	95	20	2- $\varnothing 16$
EFPD350/1300-35-200	16- $\varnothing 22$	$\varnothing 460$	4- $\varnothing 30$	$\varnothing 52 * \varnothing 60$	273	2055	35	350	700	505	860	660	620	560	716	490	63	999	897	630	560	340	95	20	2- $\varnothing 16$
EFPD350/1500-36-250	16- $\varnothing 22$	$\varnothing 460$	4- $\varnothing 30$	$\varnothing 52 * \varnothing 60$	273	2277	35	350	700	505	860	660	620	560	716	490	63	999	897	630	560	340	95	20	2- $\varnothing 16$

Dimension



Model	Dimensions(mm)																								
	N-ØA	ØB	4-ØC	ØD*ØE	H1	H2	h1	h2	h3	S	A1	A2	A3	A4	A5	A6	A7	B1	B2	T1	T2	T3	T4	T5	2-ØT
EFPD400/1300-5-37	16-Ø26	Ø515	4-Ø40	Ø69*Ø76	289	1529	40	400	800	565	980	750	700	620	822	560	76	949	866	680	610	370	115	20	2-Ø16
EFPD400/1700-6-45	16-Ø26	Ø515	4-Ø40	Ø69*Ø76	289	1529	40	400	800	565	980	750	700	620	822	560	76	949	866	680	610	370	115	20	2-Ø16
EFPD400/1300-8-55	16-Ø26	Ø515	4-Ø40	Ø69*Ø76	303	1714	40	400	800	565	980	750	700	620	822	560	76	917	760	680	610	370	115	20	2-Ø16
EFPD400/1500-8-55	16-Ø26	Ø515	4-Ø40	Ø69*Ø76	289	1683	40	400	800	565	980	750	700	620	822	560	76	996	866	680	610	370	115	20	2-Ø16
EFPD400/1300-13-75	16-Ø26	Ø515	4-Ø40	Ø69*Ø76	302	1730	40	400	800	565	980	750	700	620	822	560	76	920	790	680	610	370	115	20	2-Ø16
EFPD400/1700-10-75	16-Ø26	Ø515	4-Ø40	Ø69*Ø76	289	1529	40	400	800	565	980	750	700	620	822	560	76	949	866	680	610	370	115	20	2-Ø16
EFPD400/1500-15-90	16-Ø26	Ø515	4-Ø40	Ø69*Ø76	303	1954	40	400	800	565	980	750	700	620	822	560	76	1025	890	680	610	370	115	20	2-Ø16
EFPD400/2000-15-132	16-Ø26	Ø515	4-Ø40	Ø69*Ø76	303	2135	40	400	800	565	980	750	700	620	822	560	76	1216	1079	680	610	370	115	20	2-Ø16
EFPD400/1600-20-160	16-Ø26	Ø515	4-Ø40	Ø69*Ø76	303	1954	40	400	800	565	980	750	700	620	822	560	76	1024	897	680	610	370	115	20	2-Ø16
EFPD400/1600-22-160	16-Ø26	Ø515	4-Ø40	Ø69*Ø76	303	2135	40	400	800	565	980	750	700	620	822	560	76	1216	1079	680	610	370	115	20	2-Ø16
EFPD400/1600-25-185	16-Ø26	Ø515	4-Ø40	Ø69*Ø76	303	2085	40	400	800	565	980	750	700	620	822	560	76	1024	897	680	610	370	115	20	2-Ø16
EFPD400/1500-30-200	16-Ø26	Ø515	4-Ø40	Ø69*Ø76	303	2085	40	400	800	565	980	750	700	620	822	560	76	1024	897	680	610	370	115	20	2-Ø16
EFPD400/1800-30-250	16-Ø26	Ø515	4-Ø40	Ø69*Ø76	303	2311	40	400	800	565	980	750	700	620	822	560	76	1024	897	680	610	370	115	20	2-Ø16
EFPD500/2200-5-55	20-Ø26	Ø620	4-Ø40	Ø69*Ø76	355	1871	40	500	1000	670	1210	930	840	760	1013	725	74	1189	1004	777	707	442	120	25	2-Ø24
EFPD500/2000-8-75	20-Ø26	Ø620	4-Ø40	Ø69*Ø76	355	1871	40	500	1000	670	1210	930	840	760	1013	725	74	1189	1004	777	707	442	120	25	2-Ø24
EFPD500/2000-10-90	20-Ø26	Ø620	4-Ø40	Ø69*Ø76	355	2001	40	500	1000	670	1210	930	840	760	1013	725	74	1189	1004	777	707	442	120	25	2-Ø24
EFPD500/2500-10-110	20-Ø26	Ø620	4-Ø40	Ø69*Ø76	355	2001	40	500	1000	670	1210	930	840	760	1013	725	74	1189	1004	777	707	442	120	25	2-Ø24
EFPD500/2800-10-132	20-Ø26	Ø620	4-Ø40	Ø69*Ø76	355	2187	40	500	1000	670	1210	930	840	760	1013	725	74	1246	1079	777	707	442	120	25	2-Ø24
EFPD500/2600-16-160	20-Ø26	Ø620	4-Ø40	Ø69*Ø76	355	2187	40	500	1000	670	1210	930	840	760	1013	725	74	1246	1079	777	707	442	120	25	2-Ø24
EFPD500/3000-15-185	20-Ø26	Ø620	4-Ø40	Ø69*Ø76	355	2336	40	500	1000	670	1210	930	840	760	1013	725	74	1375	1159	777	707	442	120	25	2-Ø24
EFPD500/3000-21-250	20-Ø26	Ø620	4-Ø40	Ø69*Ø76	355	2544	40	500	1000	670	1210	930	840	760	1013	725	74	1425	1235	777	707	442	120	25	2-Ø24
EFPD600/3700-10-160	20-Ø30	Ø725	4-Ø46	Ø69*Ø76	410	2292	40	600	1200	780	1444	1120	992	900	1201	910	50	1276	1157	875	805	540	120	25	2-Ø24
EFPD600/3700-12-185	20-Ø30	Ø725	4-Ø46	Ø69*Ø76	410	2600	40	600	1200	780	1444	1120	992	900	1201	910	50	1590	1350	875	805	540	120	25	2-Ø24



5.5~22kW

18.5~30kW

37~110kW

EFPS

Performance Range

- Flow rate up to 1200 m³/h
- Head up to 88 m

Application Limits

- 5 m maximum immersion depth
- Liquid temperature +35 °C
- Ambient temperature up to +40 °C

Installation And Use

The EFPS series pump which are made of castings and equipped with cutting. Is a submersible cutter pump designed for handling raw sewage, wastewater, and heavy-duty industrial applications. These pumps have been used to drain sewage and wastewater from buildings and kitchens, and to transfer sewage and wastewater in water treatment facilities of factories and commercial complexes.

The pump is subject to clogging from oversize material. Single or two sintered tungsten carbide alloy serrated edges are combine onto the impeller vane. This mechanical cuts incoming fibrous material into pieces, permitting smooth passage of fibrous material during suction. ensuring excellent durability and enabling the pump to maintain high performance for an extended period.

Construction

Pump Body: Cast iron
 Impeller: Cutter impeller in carbide alloy
 Motor Bracket: Cast iron
 Motor Shaft: Stainless steel
 Mechanical Seal: ≤5.5kW, use Sic-Sic and Sic-Graphite;
 >5.5kW, use Sic-Sic and Sic-Alloy.
 Electric Motor: High efficiency three-phase 380/400V-50Hz-4Pole.
 Insulation: Class F.
 Protection: IP X8.

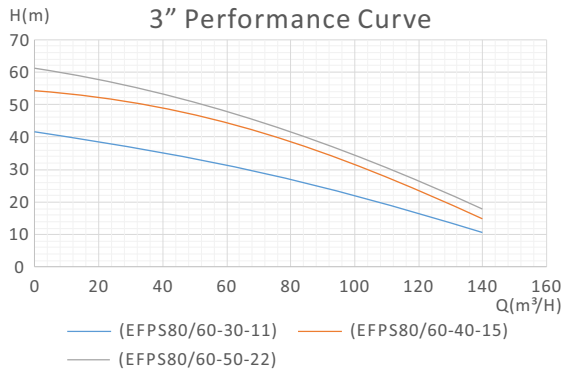
Technical Data

No.	Model	Power		Votalge	Speed	Max.head	Max.flow	Size
		kW	HP			m	m³/h	inch
1	EFPS80/60-30-11	11	15	380V/50Hz	2950/2P	41	150	3"
2	EFPS80/60-40-15	15	20	380V/50Hz	2950/2P	55	160	3"
3	EFPS80/60-50-22	22	30	380V/50Hz	2950/2P	60	160	3"
4	EFPS80/80-20-7.5	7.5	10	380V/50Hz	1450/4P	35	150	3"
5	EFPS100/100-25-11	11	15	380V/50Hz	1450/4P	45	150	3"
6	EFPS100/100-30-15	15	20	380V/50Hz	1450/4P	50	160	3"
7	EFPS100/100-35-18.5	18.5	25	380V/50Hz	1450/4P	55	160	3"
8	EFPS150/100-40-22	22	30	380V/50Hz	1450/4P	60	180	3"
9	EFPS100/110-10-5.5	5.5	7.5	380V/50Hz	1450/4P	18	140	4"
10	EFPS100/80-25-11	11	15	380V/50Hz	2950/2P	42	180	4"
11	EFPS100/80-35-15	15	20	380V/50Hz	2950/2P	50	180	4"
12	EFPS100/80-45-22	22	30	380V/50Hz	2950/2P	54	210	4"
13	EFPS100/100-15-7.5	7.5	10	380V/50Hz	1450/4P	25	160	4"
14	EFPS100/100-25-11	11	15	380V/50Hz	1450/4P	35	160	4"
15	EFPS100/100-30-15	15	20	380V/50Hz	1450/4P	40	190	4"
16	EFPS100/100-35-18.5	18.5	25	380V/50Hz	1450/4P	45	220	4"
17	EFPS150/100-40-22	22	30	380V/50Hz	1450/4P	50	250	4"
18	EFPS100/120-45-30	30	40	380V/50Hz	1450/4P	55	280	4"
19	EFPS100/120-50-37	37	50	380V/50Hz	1450/4P	60	300	4"
20	EFPS100/100-57-45	45	60	380V/50Hz	1450/4P	64	500	4"
21	EFPS100/100-65-55	55	75	380V/50Hz	1450/4P	72	450	4"
22	EFPS100/80-25-11	11	15	380V/50Hz	2950/2P	42	240	4"
23	EFPS150/100-20-11	11	15	380V/50Hz	2950/2P	35	210	6"
24	EFPS150/120-15-11	11	15	380V/50Hz	2950/2P	35	210	6"
25	EFPS150/120-25-15	15	20	380V/50Hz	2950/2P	38	200	6"
26	EFPS150/100-40-22	22	30	380V/50Hz	2950/2P	55	220	6"
27	EFPS150/150-7-5.5	5.5	7.5	380V/50Hz	1450/4P	15	240	6"
28	EFPS150/145-9-7.5	7.5	10	380V/50Hz	1450/4P	16	240	6"
29	EFPS150/180-11-11	11	15	380V/50Hz	1450/4P	21	300	6"
30	EFPS150/200-15-15	15	20	380V/50Hz	1450/4P	26	350	6"
31	EFPS150/180-20-18.5	18.5	25	380V/50Hz	1450/4P	30	380	6"
32	EFPS150/200-22-22	22	30	380V/50Hz	1450/4P	33	400	6"
33	EFPS150/180-30-30	30	40	380V/50Hz	1450/4P	41	450	6"
34	EFPS150/200-40-45	45	60	380V/50Hz	1450/4P	50	520	6"
35	EFPS150/180-50-55	55	75	380V/50Hz	1450/4P	65	600	6"
36	EFPS150/180-80-110	110	150	380V/50Hz	1450/4P	88	660	6"
37	EFPS200/250-6-7.5	7.5	10	380V/50Hz	1450/4P	17	350	8"
38	EFPS200/300-7-11	11	15	380V/50Hz	1450/4P	24	380	8"

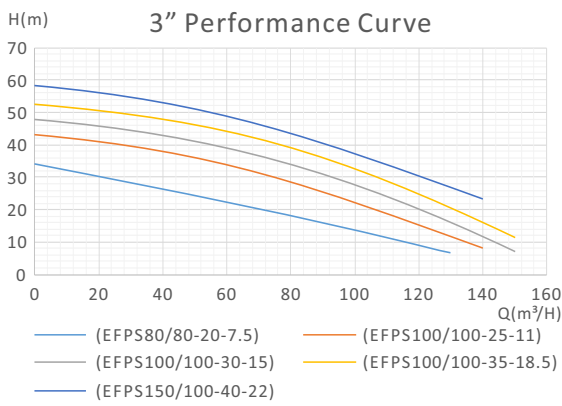
Technical Data

No.	Model	Power		Votalge	Speed	Max.head	Max.flow	Size
		kW	HP			m	m³/h	inch
39	EFPS150/180-11-11	11	15	380V/50Hz	1450/4P	34	220	8"
40	EFPS200/180-18-18.5	18.5	25	380V/50Hz	1450/4P	40	240	8"
41	EFPS200/250-11-15	15	20	380V/50Hz	1450/4P	25	400	8"
42	EFPS200/250-15-18.5	18.5	25	380V/50Hz	1450/4P	28	450	8"
43	EFPS200/250-15-18.5	18.5	25	380V/50Hz	1450/4P	24	550	8"
44	EFPS200/300-16-22	22	30	380V/50Hz	1450/4P	31	500	8"
45	EFPS200/400-10-22	22	30	380V/50Hz	1450/4P	31	500	8"
46	EFPS200/250-22-30	30	40	380V/50Hz	1450/4P	34	500	8"
47	EFPS200/300-28-37	37	50	380V/50Hz	1450/4P	40	630	8"
48	EFPS200/350-25-37	37	50	380V/50Hz	1450/4P	40	640	8"
49	EFPS200/300-32-45	45	60	380V/50Hz	1450/4P	45	660	8"
50	EFPS200/300-40-55	55	75	380V/50Hz	1450/4P	52	680	8"
51	EFPS200/400-30-55	55	75	380V/50Hz	1450/4P	47	630	8"
52	EFPS200/350-45-75	75	100	380V/50Hz	1450/4P	57	650	8"
53	EFPS200/300-60-90	90	120	380V/50Hz	1450/4P	65	700	8"
54	EFPS200/400-50-90	90	120	380V/50Hz	1450/4P	63	680	8"
55	EFPS200/300-65-110	110	150	380V/50Hz	1450/4P	73	850	8"
56	EFPS250/400-5-11	11	15	380V/50Hz	1450/4P	15	550	10"
57	EFPS250/500-5-15	15	20	380V/50Hz	1450/4P	18	600	10"
58	EFPS250/500-7-18.5	18.5	25	380V/50Hz	1450/4P	24	650	10"
59	EFPS250/500-9-22	22	30	380V/50Hz	1450/4P	24	750	10"
60	EFPS250/500-12-30	30	40	380V/50Hz	1450/4P	27	900	10"
61	EFPS250/600-9-30	30	40	380V/50Hz	1450/4P	27	820	10"
62	EFPS250/600-12-37	37	50	380V/50Hz	1450/4P	30	1000	10"
63	EFPS250/600-15-45	45	60	380V/50Hz	1450/4P	33	1100	10"
64	EFPS250/600-20-55	55	75	380V/50Hz	1450/4P	38	1000	10"
65	EFPS250/600-25-75	75	100	380V/50Hz	1450/4P	44	1100	10"
66	EFPS250/600-30-90	90	120	380V/50Hz	1450/4P	46	1100	10"
67	EFPS250/600-40-110	110	150	380V/50Hz	1450/4P	55	900	10"
68	EFPS300/650-5-18.5	18.5	25	380V/50Hz	1450/4P	24	700	12"
69	EFPS300/650-7-22	22	30	380V/50Hz	1450/4P	24	720	12"
70	EFPS300/800-7-30	30	40	380V/50Hz	1450/4P	28	1000	12"
71	EFPS300/800-9-37	37	50	380V/50Hz	1450/4P	31	1000	12"
72	EFPS300/800-12-45	45	60	380V/50Hz	1450/4P	35	1100	12"
73	EFPS300/800-15-55	55	75	380V/50Hz	1450/4P	32	1100	12"
74	EFPS300/800-20-75	75	100	380V/50Hz	1450/4P	42	1100	12"
75	EFPS300/800-25-90	90	120	380V/50Hz	1450/4P	40	1150	12"
76	EFPS300/1000-25-110	110	150	380V/50Hz	1450/4P	53	1200	12"

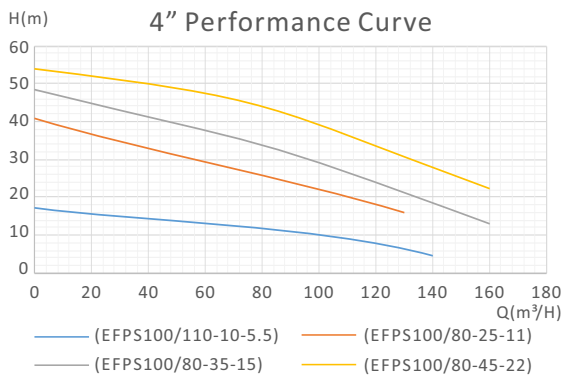
Hydraulic Performance Curves



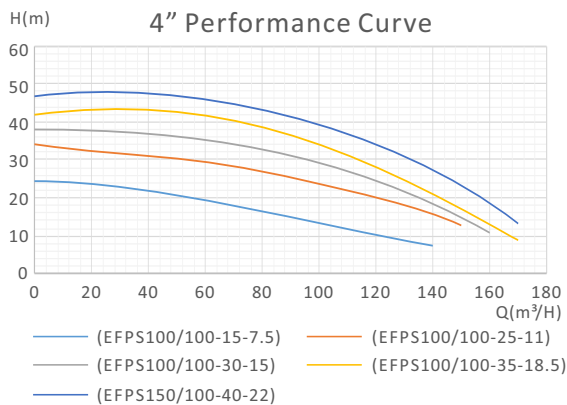
Model	Q(L/min)	0	350	680	1000	1350	1670	2000	2350	2500
	Q(m³/h)	0	20	40	60	80	100	120	140	150
EFPS80/60-30-11	H(m)	41	39	36	32	27	22	15	12	2
EFPS80/60-40-15		55	52	48	45	40	31	24	15	7
EFPS80/60-50-22		60	58	54	50	40	34	28	19	8



Model	Q(L/min)	0	350	680	1000	1350	1670	2000	2350	2500
	Q(m³/h)	0	20	40	60	80	100	120	140	150
EFPS80/80-20-7.5	H(m)	35	30	26	22	20	13	9	/	/
EFPS100/100-25-11		45	40	37	33	29	25	15	8	/
EFPS100/100-30-15		50	45	42	38	34	30	20	13	/
EFPS100/100-35-18.5		55	50	47	43	39	35	25	18	7
EFPS150/100-40-22		60	55	52	48	44	40	30	23	15

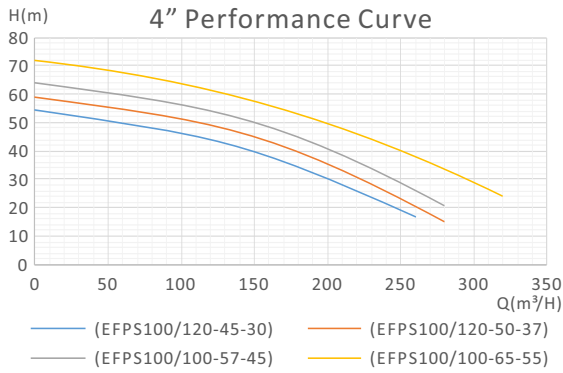


Model	Q(L/min)	0	350	680	1002	1350	1670	2000	2350	2680
	Q(m³/h)	0	20	40	60	80	100	120	140	160
EFPS100/110-10-5.5	H(m)	18	16	14	13	12	11	8	3	/
EFPS100/80-25-11		42	36	33	30	26	22	18	8	4
EFPS100/80-35-15		50	45	41	38	35	30	26	20	10
EFPS100/80-45-22		54	52	50	48	45	39	33	28	19

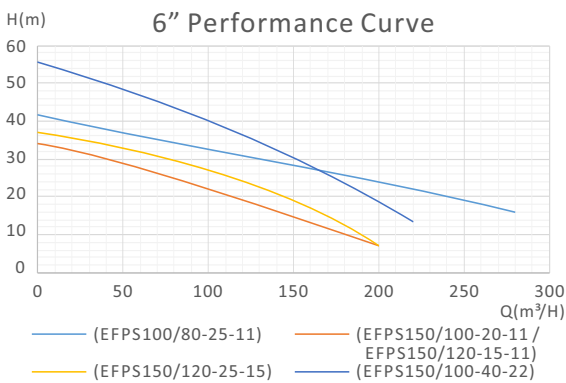


Model	Q(L/min)	0	350	680	1002	1350	1670	2000	2350	2680
	Q(m³/h)	0	20	40	60	80	100	120	140	160
EFPS100/100-15-7.5	H(m)	25	23	21	19	17	15	10	7	2
EFPS100/100-25-11		35	33	31	29	27	25	20	17	10
EFPS100/100-30-15		40	38	36	34	32	30	25	22	15
EFPS100/100-35-18.5		45	43	41	39	37	35	30	27	20
EFPS150/100-40-22		50	48	46	44	42	40	35	32	25

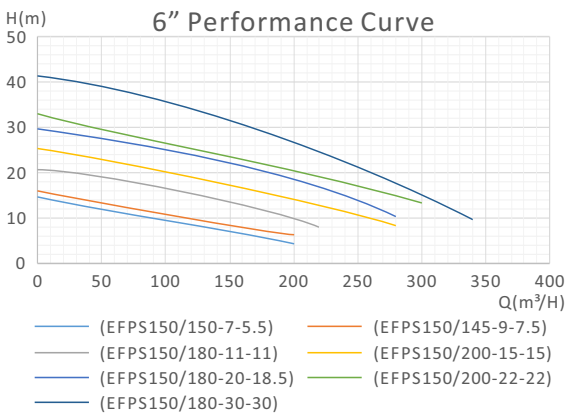
Hydraulic Performance Curves



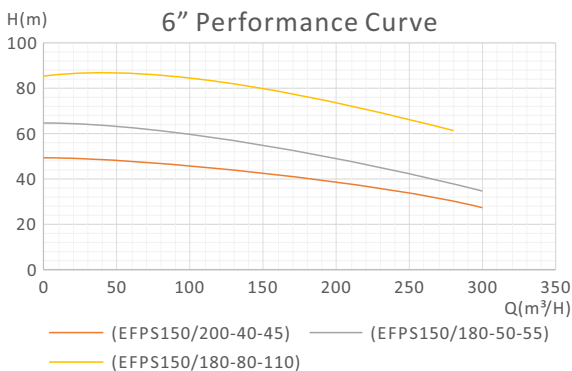
Model	Q(L/min)	0	680	1350	2000	2680	3400	4000	4680	5000
	Q(m³/h)	0	40	80	120	160	200	240	280	300
EFPS100/120-45-30	H(m)	55	52	48	45	37	30	22	/	/
EFPS100/120-50-37		60	57	53	50	42	35	27	13	2
EFPS100/100-57-45		64	62	59	53	48	42	31	20	14
EFPS100/100-65-55		72	69	66	60	56	50	42	35	25



Model	Q(L/min)	0	350	680	1000	1350	2000	2680	3000	3400
	Q(m³/h)	0	20	40	60	80	120	160	180	200
EFPS100/80-25-11	H(m)	42	40	38	36	35	32	28	26	24
EFPS150/100-20-11		35	32	30	26	24	20	15	10	6
EFPS150/120-15-11		35	32	30	26	24	20	15	10	6
EFPS150/120-25-15		38	36	34	32	28	25	18	13	5
EFPS150/100-40-22	55	53	50	48	45	36	27	23	19	

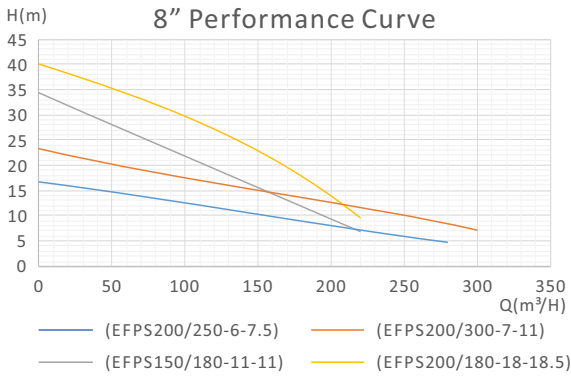


Model	Q(L/min)	0	680	1350	1670	2000	2500	3000	3400	3680
	Q(m³/h)	0	40	80	100	120	150	180	200	220
EFPS150/150-7-5.5	H(m)	15	12	10	10	8.5	7	5	4	/
EFPS150/145-9-7.5		16	13.5	11.5	11.5	10	8	7	6	/
EFPS150/180-11-11		21	19.5	17.5	17.5	16	13	11	10	8
EFPS150/200-15-15		26	22	21	21	19	17	16	15	12
EFPS150/180-20-18.5		30	28	26	26	24	22	21	18	16
EFPS150/200-22-22		33	31	29	29	26	24	23	22	20
EFPS150/180-30-30	41	39	37	37	35	32	30	26	22	

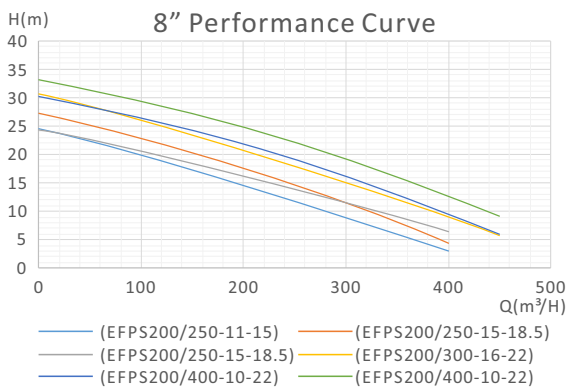


Model	Q(L/min)	0	1350	2000	2350	3000	3400	3680	4680	6680
	Q(m³/h)	0	80	120	140	180	200	220	280	400
EFPS150/200-40-45	H(m)	50	46	44	43	41	40	37	30	20
EFPS150/180-50-55		65	60	58	57	50	48	46	38	22
EFPS150/180-80-110		88	82.5	81.5	81	80	76	72	60	52

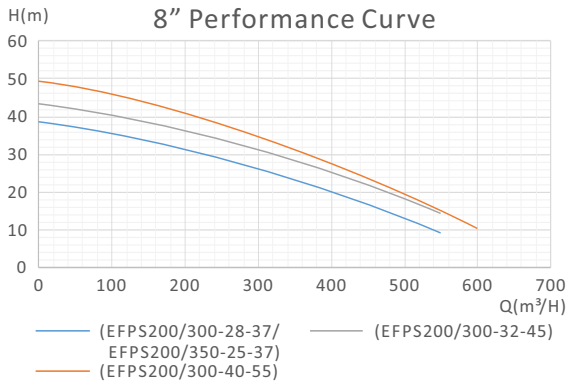
Hydraulic Performance Curves



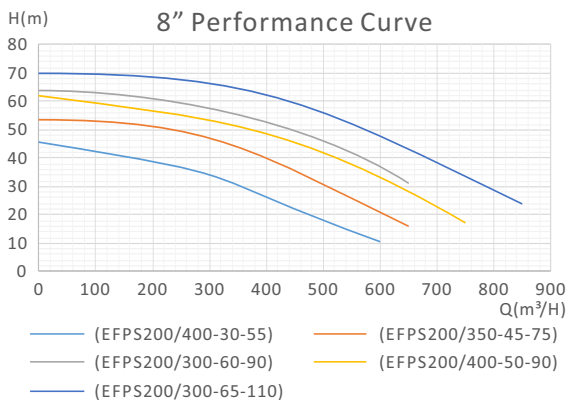
Model	Q(L/min)	0	1336	2004	2672	3006	3340	4008	4342	5010
	Q(m³/h)	0	80	120	160	180	200	240	260	300
EFPS200/250-6-7.5	H(m)	17	14	12	10	9.5	9	7.5	6	4
EFPS200/300-7-11		24	18	16	14	13	12	10	9	5
EFPS150/180-11-11		34	23	20	15	14	10	/	/	/
EFPS200/180-18-18.5		40	32	26	22	18	15	/	/	/



Model	Q(L/min)	0	850	1670	3400	4200	5000	5850	6680	7500
	Q(m³/h)	0	50	100	200	250	300	350	400	450
EFPS200/250-11-15	H(m)	25	22	19	15	12	9	6	3	/
EFPS200/250-15-18.5		28	25	22	18	15	13.5	7	4	/
EFPS200/250-15-18.5		24	23	21	16	14	11	10	6	/
EFPS200/300-16-22		31	29	25	20	18	16	13	9	5
EFPS200/400-10-22	31	28	26	21	19	17	14	10	5	
EFPS200/250-22-30	34	31	24	22	20	17	13	8	5	

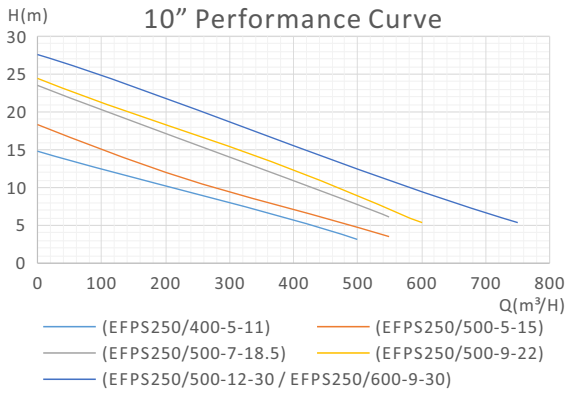


Model	Q(L/min)	0	1670	3400	5000	5850	6680	8350	9200	10000
	Q(m³/h)	0	100	200	300	350	400	500	550	600
EFPS200/300-28-37	H(m)	40	33	30	28	25	20	14	8	3
EFPS200/350-25-37		40	33	30	28	25	20	14	8	3
EFPS200/300-32-45		45	38	35	33	30	25	19	13	6
EFPS200/300-40-55		52	44	42	40	33	31	29	23	5.2

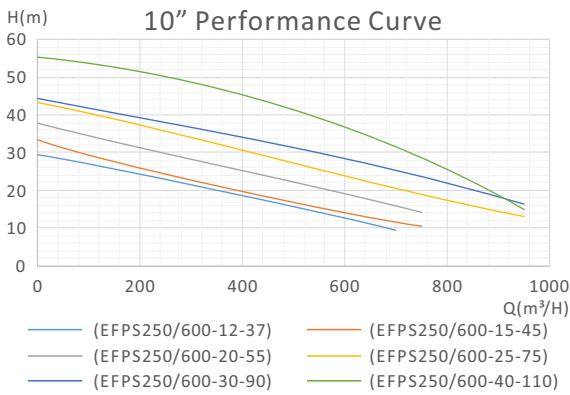


Model	Q(L/min)	0	850	1670	3400	5000	6680	9200	10000	10850
	Q(m³/h)	0	50	100	200	300	400	500	600	650
EFPS200/400-30-55	H(m)	47	46	43	39	32	30	22	7	/
EFPS200/350-45-75		57	55	52	48.5	46	40	34	28	6
EFPS200/300-60-90		65	63	62	61	60	52	43	38	32
EFPS200/400-50-90		63	62	61	57	53	47	42	36	31
EFPS200/300-65-110	73	72	70	67	65	61	55	50	48	

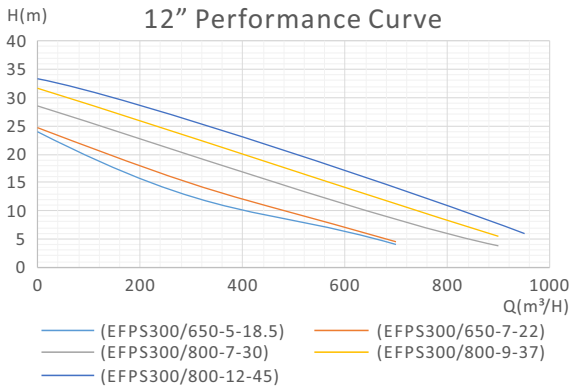
Hydraulic Performance Curves



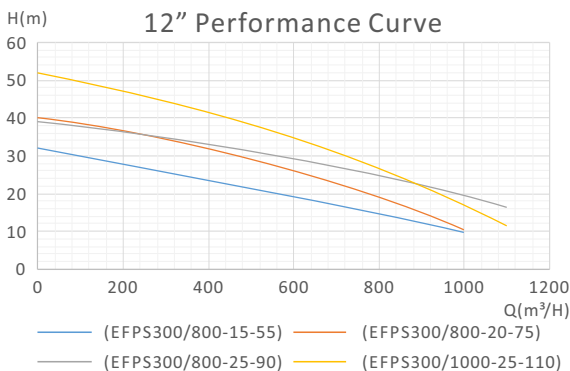
Model	Q(L/min)	0	1670	3400	5000	6680	8350	9150	10000	11670
	Q(m³/h)	0	100	200	300	400	500	550	600	700
EFPS250/400-5-11	H(m)	15	12	10	8	6	3	/	/	/
EFPS250/500-5-15		18	16	11	9	6.5	5	3	/	/
EFPS250/500-7-18.5		24	20	16	14	11	8	5	3	/
EFPS250/500-9-22		24	22	19	16	13	9	7	6	4
EFPS250/500-12-30		27	25	22	18	15	12	11	10	6
EFPS250/600-9-30		27	25	22	18	15	12	11	10	6



Model	Q(L/min)	0	1670	3400	5000	6680	8350	10000	11690	15000
	Q(m³/h)	0	100	200	300	400	500	600	700	900
EFPS250/600-12-37	H(m)	30	27	24	21	19	16	13	9	2
EFPS250/600-15-45		33	30	28	19	21	18	15	11	4
EFPS250/600-20-55		38	35	31	28	25	23	20	15	10
EFPS250/600-25-75		44	40	36	33	30	27	25	20	17
EFPS250/600-30-90		46	42	39	37	33	31	30	26	20
EFPS250/600-40-110		55	54	52	49	45	43	40	28	22

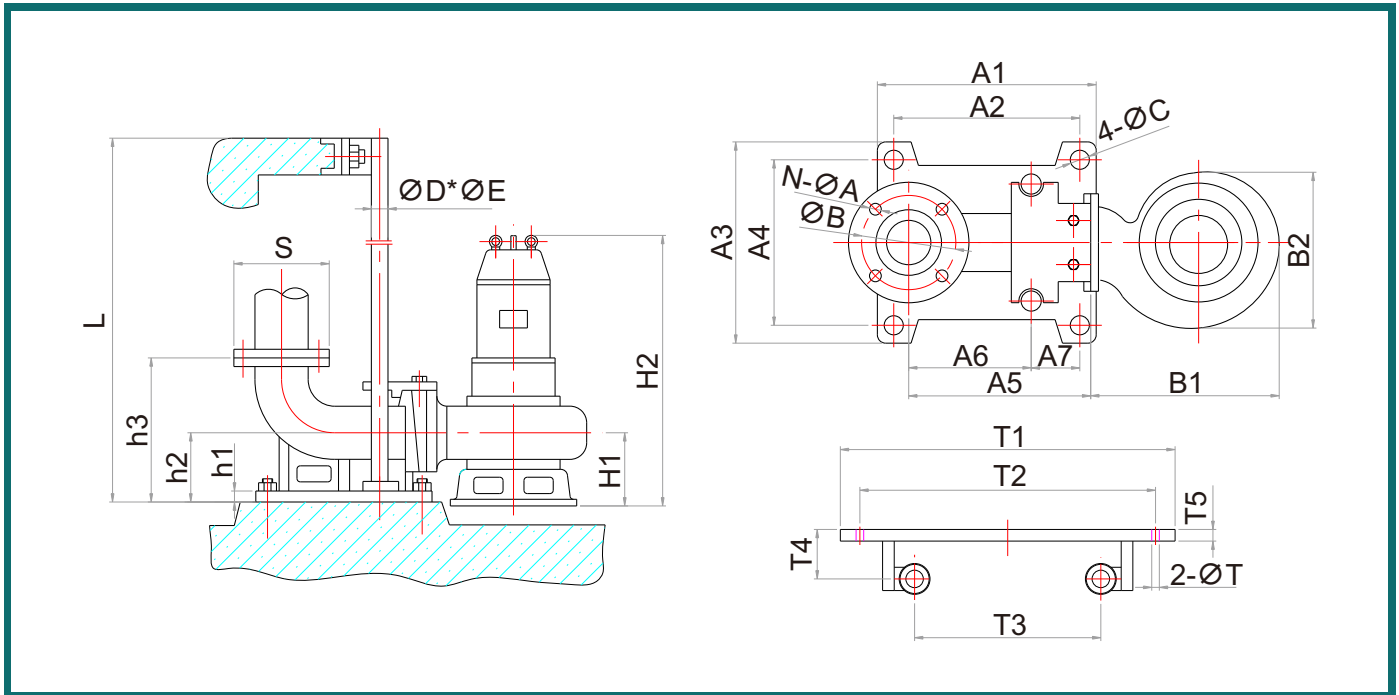


Model	Q(L/min)	0	3400	6680	8350	10000	11690	13360	15000	16700
	Q(m³/h)	0	200	400	500	600	700	800	900	1000
EFPS300/650-5-18.5	H(m)	24	15	10	8	6	3	/	/	/
EFPS300/650-7-22		24	18	11	9	7	4	/	/	/
EFPS300/800-7-30		28	23.5	16	14	11	9	7	5	/
EFPS300/800-9-37		31	26	19	16	13	11	9	7	2
EFPS300/800-12-45		35	28	23	20	17	14	12	10	6



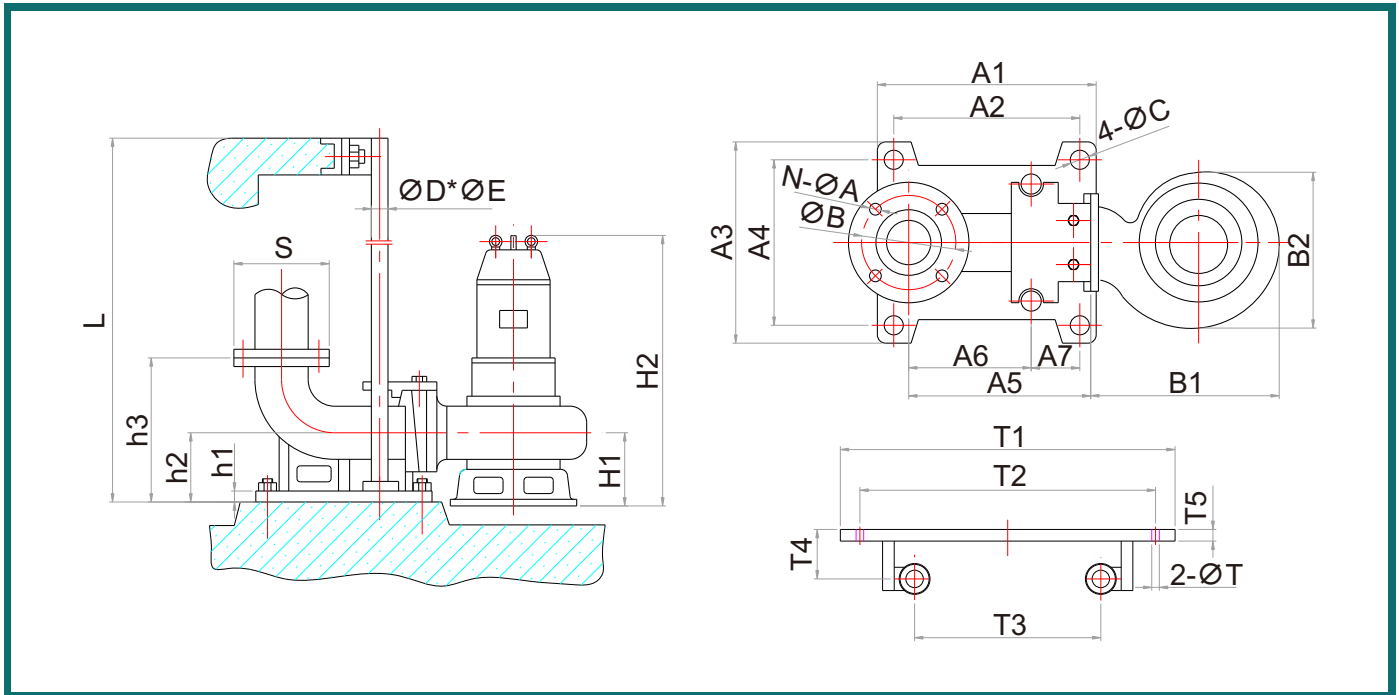
Model	Q(L/min)	0	1670	3400	6680	10000	13360	15000	16700	18370
	Q(m³/h)	0	100	200	400	600	800	900	1000	1100
EFPS300/800-15-55	H(m)	32	30	26	24	20	15	12	8	/
EFPS300/800-20-75		42	38	36	30	27	20	16	8	/
EFPS300/800-25-90		40	38	36	3	28	26	23	20	15
EFPS300/1000-25-110		53	50	40	35	27	26	25	8	5

Dimension



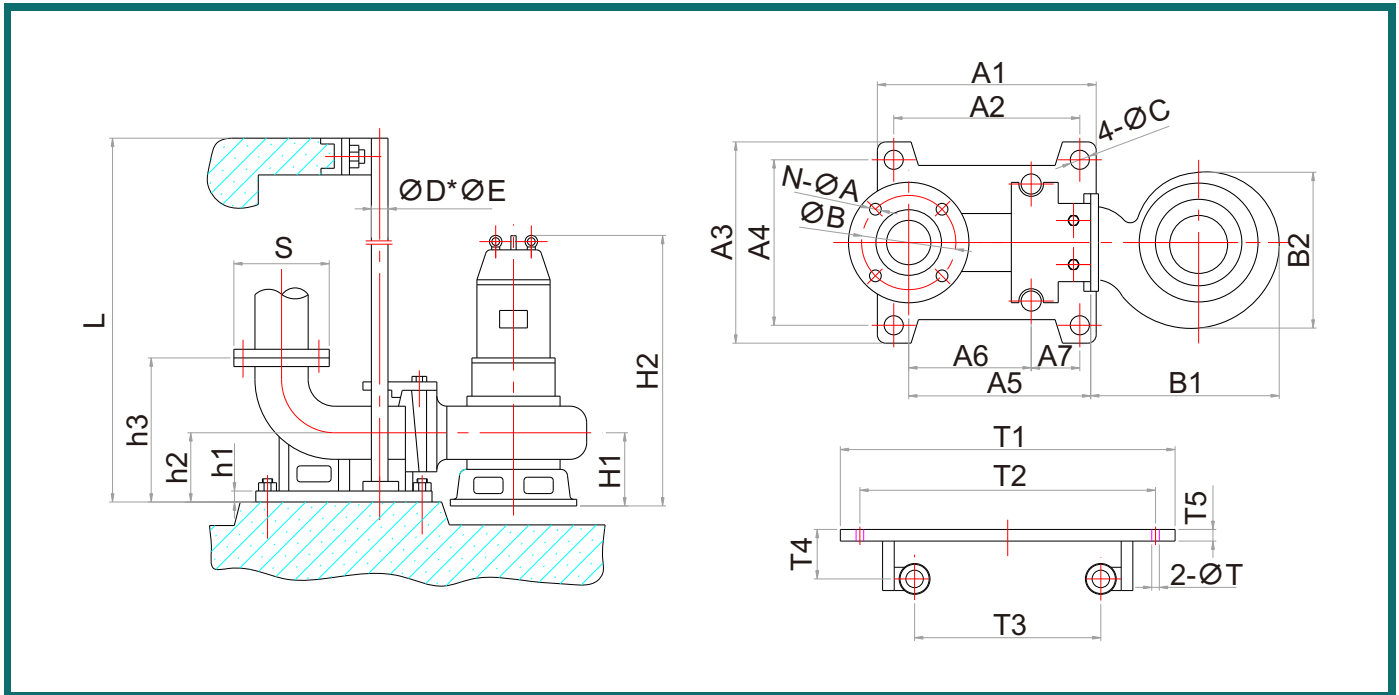
Model	Dimensions(mm)																									
	N- $\varnothing A$	$\varnothing B$	4- $\varnothing C$	$\varnothing D^* \varnothing E$	H1	H2	h1	h2	h3	S	A1	A2	A3	A4	A5	A6	A7	B1	B2	T1	T2	T3	T4	T5	2- $\varnothing T$	
EFPS80/60-30-11	4- $\varnothing 18$	150	4- $\varnothing 16$	$\varnothing 42-\varnothing 47$	194	909	12	170	280	190	270	210	230	195	300	192	50	465	381	315	270	150	80	20	2- $\varnothing 12$	
EFPS80/60-40-15	4- $\varnothing 18$	150	4- $\varnothing 16$	$\varnothing 42-\varnothing 47$	194	1009	12	170	280	190	270	210	230	195	300	192	50	465	381	315	270	150	80	20	2- $\varnothing 12$	
EFPS80/60-50-22	4- $\varnothing 18$	150	4- $\varnothing 16$	$\varnothing 42-\varnothing 47$	194	1009	12	170	280	190	270	210	230	195	300	192	50	465	381	315	270	150	80	20	2- $\varnothing 12$	
EFPS80/80-20-7.5	4- $\varnothing 18$	150	4- $\varnothing 16$	$\varnothing 42-\varnothing 47$	194	850	12	170	280	190	270	210	230	195	300	192	50	465	381	315	270	150	80	20	2- $\varnothing 12$	
EFPS100/100-25-11	4- $\varnothing 18$	150	4- $\varnothing 16$	$\varnothing 42-\varnothing 47$	194	909	12	170	280	190	270	210	230	195	300	192	50	465	382	315	270	150	80	20	2- $\varnothing 12$	
EFPS100/100-30-15	4- $\varnothing 18$	150	4- $\varnothing 16$	$\varnothing 42-\varnothing 47$	225	940	12	170	280	190	270	210	230	195	300	192	50	465	382	315	270	150	80	20	2- $\varnothing 12$	
EFPS100/100-35-18.5	4- $\varnothing 18$	150	4- $\varnothing 16$	$\varnothing 42-\varnothing 47$	185	1149	12	170	280	190	270	210	230	195	300	192	50	556	466	315	270	150	80	20	2- $\varnothing 12$	
EFPS150/100-40-22	4- $\varnothing 18$	150	4- $\varnothing 16$	$\varnothing 42-\varnothing 47$	194	1009	12	170	280	190	270	210	230	195	300	192	50	465	381	315	270	150	80	20	2- $\varnothing 12$	
EFPS100/110-10-5.5	4- $\varnothing 18$	170	4- $\varnothing 20$	$\varnothing 42-\varnothing 47$	194	850	15	200	340	210	320	256	270	230	355	233	60	465	381	360	305	170	90	20	2- $\varnothing 12$	
EFPS100/80-25-11	4- $\varnothing 18$	170	4- $\varnothing 20$	$\varnothing 42-\varnothing 47$	194	850	15	200	340	210	320	256	270	230	355	233	60	465	381	360	305	170	90	20	2- $\varnothing 12$	
EFPS100/80-35-15	4- $\varnothing 18$	170	4- $\varnothing 20$	$\varnothing 42-\varnothing 47$	194	909	15	200	340	210	320	256	270	230	355	233	60	465	381	360	305	170	90	20	2- $\varnothing 12$	
EFPS100/80-45-22	4- $\varnothing 18$	170	4- $\varnothing 20$	$\varnothing 42-\varnothing 47$	194	1009	15	200	340	210	320	256	270	230	355	233	60	465	381	360	305	170	90	20	2- $\varnothing 12$	
EFPS100/100-15-7.5	4- $\varnothing 18$	170	4- $\varnothing 20$	$\varnothing 42-\varnothing 47$	194	850	15	200	340	210	320	256	270	230	355	233	60	465	381	360	305	170	90	20	2- $\varnothing 12$	
EFPS100/100-25-11	4- $\varnothing 18$	170	4- $\varnothing 20$	$\varnothing 42-\varnothing 47$	230	1157	15	200	340	210	320	256	270	230	355	233	60	557	466	360	305	170	90	20	2- $\varnothing 12$	
EFPS100/100-30-15	4- $\varnothing 18$	170	4- $\varnothing 20$	$\varnothing 42-\varnothing 47$	230	1157	15	200	340	210	320	256	270	230	355	233	60	557	445	360	305	170	90	20	2- $\varnothing 12$	
EFPS100/100-35-18.5	4- $\varnothing 18$	170	4- $\varnothing 20$	$\varnothing 42-\varnothing 47$	230	1157	15	200	340	210	320	256	270	230	355	233	60	557	445	360	305	170	90	20	2- $\varnothing 12$	
EFPS150/100-40-22	4- $\varnothing 18$	170	4- $\varnothing 20$	$\varnothing 42-\varnothing 47$	230	1207	15	200	340	210	320	256	270	230	355	233	60	557	445	360	305	170	90	20	2- $\varnothing 12$	
EFPS100/120-45-30	4- $\varnothing 18$	170	4- $\varnothing 20$	$\varnothing 42-\varnothing 47$	296	1362	15	200	340	210	320	256	270	230	355	233	60	665	625	360	305	170	90	20	2- $\varnothing 12$	
EFPS100/120-50-37	4- $\varnothing 18$	170	4- $\varnothing 20$	$\varnothing 42-\varnothing 47$	296	1432	15	200	340	210	320	256	270	230	355	233	60	673	625	360	305	170	90	20	2- $\varnothing 12$	
EFPS100/100-57-45	4- $\varnothing 18$	170	4- $\varnothing 20$	$\varnothing 42-\varnothing 47$	296	1517	15	200	340	210	320	256	270	230	355	233	60	713	625	360	305	170	90	20	2- $\varnothing 12$	
EFPS100/100-65-55	4- $\varnothing 18$	170	4- $\varnothing 20$	$\varnothing 42-\varnothing 47$	296	1586	15	200	340	210	320	256	270	230	355	233	60	713	625	360	305	170	90	20	2- $\varnothing 12$	
EFPS100/80-25-11	4- $\varnothing 18$	170	4- $\varnothing 20$	$\varnothing 42-\varnothing 47$	194	909	15	200	340	210	320	256	270	230	355	233	60	465	381	360	305	170	90	20	2- $\varnothing 12$	

Dimension



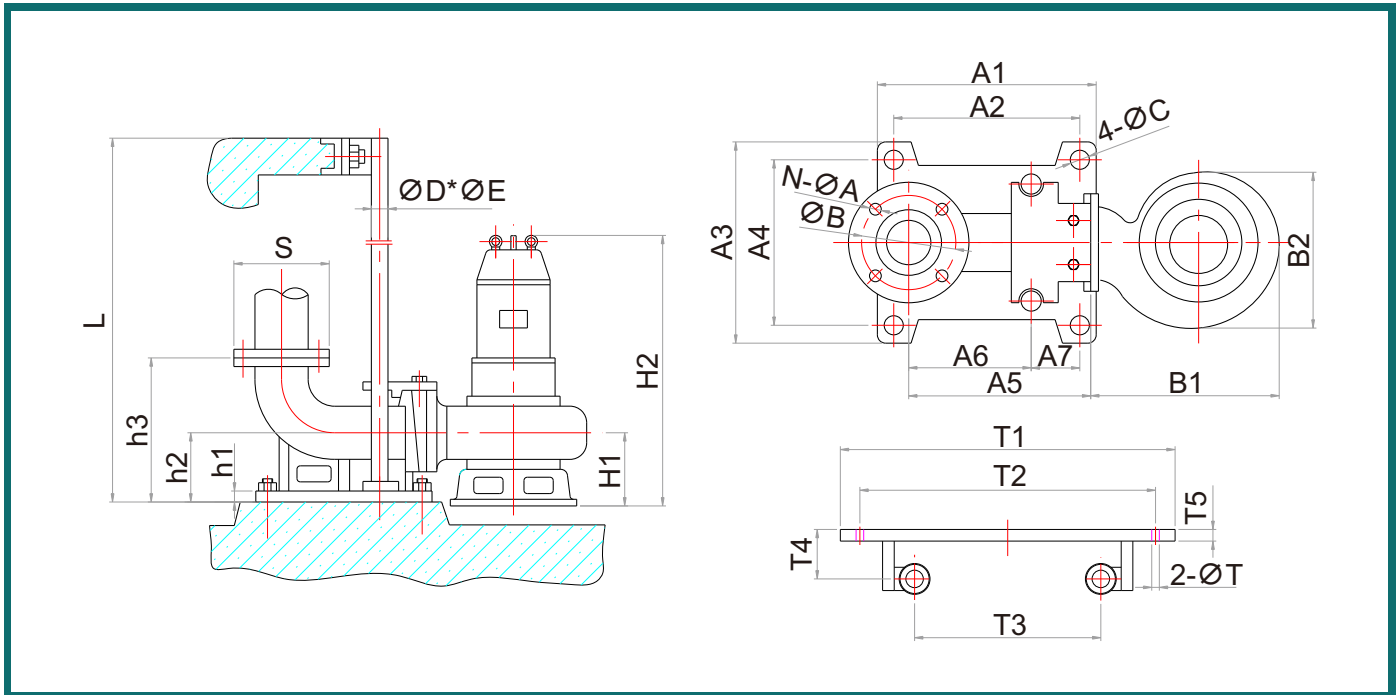
Model	Dimensions(mm)																									
	N- $\varnothing A$	$\varnothing B$	4- $\varnothing C$	$\varnothing D^* \varnothing E$	H1	H2	h1	h2	h3	S	A1	A2	A3	A4	A5	A6	A7	B1	B2	T1	T2	T3	T4	T5	2- $\varnothing T$	
EFPS150/100-20-11	8- $\varnothing 18$	225	4- $\varnothing 20$	$\varnothing 42-\varnothing 47$	207	920	18	180	350	265	486	370	300	260	415	255	56	526	422	465	400	205	80	15	2- $\varnothing 16$	
EFPS150/120-15-11	8- $\varnothing 18$	225	4- $\varnothing 20$	$\varnothing 42-\varnothing 47$	250	1180	18	180	350	265	486	370	300	260	415	255	56	590	470	465	400	205	80	15	2- $\varnothing 16$	
EFPS150/120-25-15	8- $\varnothing 18$	225	4- $\varnothing 20$	$\varnothing 42-\varnothing 47$	207	920	18	180	350	265	486	370	300	260	415	255	56	526	422	465	400	205	80	15	2- $\varnothing 16$	
EFPS150/100-40-22	8- $\varnothing 18$	225	4- $\varnothing 20$	$\varnothing 42-\varnothing 47$	207	1020	18	180	350	265	486	370	300	260	415	255	56	526	422	465	400	205	80	15	2- $\varnothing 16$	
EFPS150/150-7-5.5	8- $\varnothing 18$	225	4- $\varnothing 20$	$\varnothing 42-\varnothing 47$	205	858	18	180	350	265	486	370	300	260	415	255	56	526	422	465	400	205	80	15	2- $\varnothing 16$	
EFPS150/145-9-7.5	8- $\varnothing 18$	225	4- $\varnothing 20$	$\varnothing 42-\varnothing 47$	205	858	18	180	350	265	486	370	300	260	415	255	56	526	422	465	400	205	80	15	2- $\varnothing 16$	
EFPS150/180-11-11	8- $\varnothing 18$	225	4- $\varnothing 20$	$\varnothing 42-\varnothing 47$	250	1180	18	180	350	265	486	370	300	260	415	255	56	590	470	465	400	205	80	15	2- $\varnothing 16$	
EFPS150/200-15-15	8- $\varnothing 18$	225	4- $\varnothing 20$	$\varnothing 42-\varnothing 47$	205	1081	18	180	350	265	486	370	300	260	415	255	56	588	490	465	400	205	80	15	2- $\varnothing 16$	
EFPS150/180-20-18.5	8- $\varnothing 18$	225	4- $\varnothing 20$	$\varnothing 42-\varnothing 47$	205	1081	18	180	350	265	486	370	300	260	415	255	56	588	490	465	400	205	80	15	2- $\varnothing 16$	
EFPS150/200-22-22	8- $\varnothing 18$	225	4- $\varnothing 20$	$\varnothing 42-\varnothing 47$	205	1157	18	180	350	265	486	370	300	260	415	255	56	588	490	465	400	205	80	15	2- $\varnothing 16$	
EFPS150/180-30-30	8- $\varnothing 18$	225	4- $\varnothing 20$	$\varnothing 42-\varnothing 47$	311	1390	18	180	350	265	486	370	300	260	415	255	56	713	625	465	400	205	80	15	2- $\varnothing 16$	
EFPS150/200-40-45	8- $\varnothing 18$	225	4- $\varnothing 20$	$\varnothing 42-\varnothing 47$	311	1545	18	180	350	265	486	370	300	260	415	255	56	713	625	465	400	205	80	15	2- $\varnothing 16$	
EFPS150/180-50-55	8- $\varnothing 18$	225	4- $\varnothing 20$	$\varnothing 42-\varnothing 47$	311	1545	18	180	350	265	486	370	300	260	415	255	56	713	625	465	400	205	80	15	2- $\varnothing 16$	
EFPS150/180-80-110	8- $\varnothing 18$	225	4- $\varnothing 20$	$\varnothing 42-\varnothing 47$	311	1545	18	180	350	265	486	370	300	260	415	255	56	713	625	465	400	205	80	15	2- $\varnothing 16$	

Dimension



Model	Dimensions(mm)																									
	N-ØA	ØB	4-ØC	ØD*ØE	H1	H2	h1	h2	h3	S	A1	A2	A3	A4	A5	A6	A7	B1	B2	T1	T2	T3	T4	T5	2-ØT	
EFPS200/250-6-7.5	8-Ø18	280	4-Ø20	Ø42-Ø47	205	858	20	220	444	320	626	490	390	350	537	375	46	540	448	530	465	260	83	18	2-Ø16	
EFPS200/300-7-11	8-Ø18	280	4-Ø20	Ø42-Ø47	250	1166	20	220	444	320	626	490	390	350	537	375	46	590	491	530	465	260	83	18	2-Ø16	
EFPS150/180-11-11	8-Ø18	280	4-Ø20	Ø42-Ø47	207	920	20	220	444	320	626	490	390	350	537	375	46	540	448	530	465	260	83	18	2-Ø16	
EFPS200/180-18-18.5	8-Ø18	280	4-Ø20	Ø42-Ø47	207	1020	20	220	444	320	626	490	390	350	537	375	46	540	448	530	465	260	83	18	2-Ø16	
EFPS200/250-11-15	8-Ø18	280	4-Ø20	Ø42-Ø47	205	1081	20	220	444	320	626	490	390	350	537	375	46	590	491	530	465	260	83	18	2-Ø16	
EFPS200/250-15-18.5	8-Ø18	280	4-Ø20	Ø42-Ø47	205	1157	20	220	444	320	626	490	390	350	537	375	46	590	491	530	465	260	83	18	2-Ø16	
EFPS200/250-15-18.5	8-Ø18	280	4-Ø20	Ø42-Ø47	205	1157	20	220	444	320	626	490	390	350	537	375	46	590	491	530	465	260	83	18	2-Ø16	
EFPS200/300-16-22	8-Ø18	280	4-Ø20	Ø42-Ø47	205	1157	20	220	444	320	626	490	390	350	537	375	46	590	491	530	465	260	83	18	2-Ø16	
EFPS200/400-10-22	8-Ø18	280	4-Ø20	Ø42-Ø47	205	1157	20	220	444	320	626	490	390	350	537	375	46	590	491	530	465	260	83	18	2-Ø16	
EFPS200/250-22-30	8-Ø18	280	4-Ø20	Ø42-Ø47	311	1390	20	220	444	320	626	490	390	350	537	375	46	713	1390	530	465	260	83	18	2-Ø16	
EFPS200/300-28-37	8-Ø18	280	4-Ø20	Ø42-Ø47	311	1460	20	220	444	320	626	490	390	350	537	375	46	713	625	530	465	260	83	18	2-Ø16	
EFPS200/350-25-37	8-Ø18	280	4-Ø20	Ø42-Ø47	311	1460	20	220	444	320	626	490	390	350	537	375	46	713	625	530	465	260	83	18	2-Ø16	
EFPS200/300-32-45	8-Ø18	280	4-Ø20	Ø42-Ø47	311	1544	20	220	444	320	626	490	390	350	537	375	46	713	625	530	465	260	83	18	2-Ø16	
EFPS200/300-40-55	8-Ø18	280	4-Ø20	Ø42-Ø47	311	1614	20	220	444	320	626	490	390	350	537	375	46	713	625	530	465	260	83	18	2-Ø16	
EFPS200/400-30-55	8-Ø18	280	4-Ø20	Ø42-Ø47	311	1614	20	220	444	320	626	490	390	350	537	375	46	713	625	530	465	260	83	18	2-Ø16	
EFPS200/350-45-75	8-Ø18	280	4-Ø20	Ø42-Ø47	327	1682	20	220	444	320	626	490	390	350	537	375	46	759	651	530	465	260	83	18	2-Ø16	
EFPS200/300-60-90	8-Ø18	280	4-Ø20	Ø42-Ø47	327	1757	20	220	444	320	626	490	390	350	537	375	46	759	651	530	465	260	83	18	2-Ø16	
EFPS200/400-50-90	8-Ø18	280	4-Ø20	Ø42-Ø47	327	1757	20	220	444	320	626	490	390	350	537	375	46	759	651	530	465	260	83	18	2-Ø16	
EFPS200/300-65-110	8-Ø18	280	4-Ø20	Ø42-Ø47	327	1887	20	220	444	320	626	490	390	350	537	375	46	759	651	530	465	260	83	18	2-Ø16	

Dimension



Model	Dimensions(mm)																									
	N-ØA	ØB	4-ØC	ØD*ØE	H1	H2	h1	h2	h3	S	A1	A2	A3	A4	A5	A6	A7	B1	B2	T1	T2	T3	T4	T5	2-ØT	
EFPS250/400-5-11	12-Ø22	350	4-Ø30	Ø52-Ø60	274	1185	20	250	500	395	666	480	480	420	555	350	55	720	595	595	525	305	95	20	2-Ø16	
EFPS250/500-5-15	12-Ø22	350	4-Ø30	Ø52-Ø60	274	1185	20	250	500	395	666	480	480	420	555	350	55	720	595	595	525	305	95	20	2-Ø16	
EFPS250/500-7-18.5	12-Ø22	350	4-Ø30	Ø52-Ø60	274	1185	20	250	500	395	666	480	480	420	555	350	55	720	595	595	525	305	95	20	2-Ø16	
EFPS250/500-9-22	12-Ø22	350	4-Ø30	Ø52-Ø60	274	1185	20	250	500	395	666	480	480	420	555	350	55	720	595	595	525	305	95	20	2-Ø16	
EFPS250/500-12-30	12-Ø22	350	4-Ø30	Ø52-Ø60	335	1415	20	250	500	395	666	480	480	420	555	350	55	775	672	595	525	305	95	20	2-Ø16	
EFPS250/600-9-30	12-Ø22	350	4-Ø30	Ø52-Ø60	335	1415	20	250	500	395	666	480	480	420	555	350	55	775	672	595	525	305	95	20	2-Ø16	
EFPS250/600-12-37	12-Ø22	350	4-Ø30	Ø52-Ø60	335	1485	20	250	500	395	666	480	480	420	555	350	55	775	672	595	525	305	95	20	2-Ø16	
EFPS250/600-15-45	12-Ø22	350	4-Ø30	Ø52-Ø60	335	1570	20	250	500	395	666	480	480	420	555	350	55	775	672	595	525	305	95	20	2-Ø16	
EFPS250/600-20-55	12-Ø22	350	4-Ø30	Ø52-Ø60	335	1639	20	250	500	395	666	480	480	420	555	350	55	775	672	595	525	305	95	20	2-Ø16	
EFPS250/600-25-75	12-Ø22	350	4-Ø30	Ø52-Ø60	352	1720	20	250	500	395	666	480	480	420	555	350	55	846	687	595	525	305	95	20	2-Ø16	
EFPS250/600-30-90	12-Ø22	350	4-Ø30	Ø52-Ø60	352	1720	20	250	500	395	666	480	480	420	555	350	55	846	687	595	525	305	95	20	2-Ø16	
EFPS250/600-40-110	12-Ø22	350	4-Ø30	Ø52-Ø60	352	1720	20	250	500	395	666	480	480	420	555	350	55	846	687	595	525	305	95	20	2-Ø16	
EFPS300/650-5-18.5	12-Ø22	350	4-Ø30	Ø52-Ø60	271	1260	30	300	600	445	760	570	560	500	625	420	52	720	595	630	560	340	95	20	2-Ø16	
EFPS300/650-7-22	12-Ø22	350	4-Ø30	Ø52-Ø60	271	1260	30	300	600	445	760	570	560	500	625	420	52	720	595	630	560	340	95	20	2-Ø16	
EFPS300/800-7-30	12-Ø22	350	4-Ø30	Ø52-Ø60	335	1485	30	300	600	445	760	570	560	500	625	420	52	775	672	630	560	340	95	20	2-Ø16	
EFPS300/800-9-37	12-Ø22	350	4-Ø30	Ø52-Ø60	335	1485	30	300	600	445	760	570	560	500	625	420	52	775	672	630	560	340	95	20	2-Ø16	
EFPS300/800-12-45	12-Ø22	350	4-Ø30	Ø52-Ø60	335	1485	30	300	600	445	760	570	560	500	625	420	52	775	672	630	560	340	95	20	2-Ø16	
EFPS300/800-15-55	12-Ø22	350	4-Ø30	Ø52-Ø60	335	1570	30	300	600	445	760	570	560	500	625	420	52	775	672	630	560	340	95	20	2-Ø16	
EFPS300/800-20-75	12-Ø22	350	4-Ø30	Ø52-Ø60	352	1720	30	300	600	445	760	570	560	500	625	420	52	846	698	630	560	340	95	20	2-Ø16	
EFPS300/800-25-90	12-Ø22	350	4-Ø30	Ø52-Ø60	352	1795	30	300	600	445	760	570	560	500	625	420	52	846	698	630	560	340	95	20	2-Ø16	
EFPS300/1000-25-110	12-Ø22	350	4-Ø30	Ø52-Ø60	352	1925	30	300	600	445	760	570	560	500	625	420	52	846	698	630	560	340	95	20	2-Ø16	